

# The Belleville Times

News

Vol. XXVIII, No. 14

Office at Newark, N. J., under the Act of March 8, 1879.  
Entered as Second Class matter, April 16, 1942 at the Post

BELLEVILLE, N. J., THURSDAY, OCTOBER 9, 1952

Published Every Thursday By  
The Belleville News Corporation

Telephone BB-1200  
225 Washington Avenue

5c per copy, \$2.00 per year

## Neighbors Give to Community Chest

### Many Organizations And Cross Section Of Citizens Serve In Promoting Boy Scout Movement In Town

Scouting At All Time High  
Here With 726 Boys, 200  
Adults Participating

Boy Scouting in Belleville is at an all time high with 736 boys enrolled and 200 adults serving as leaders, according to figures released this week by the Robert Treat Council, Boy Scouts of America. There are 311 Cub Scouts and 412 Boy Scouts, including Explorers in troops and in Explorers units.

These scouts belong to 10 Cub Packs, 15 Scout Troops and one Sea Scout Ship. Last week-end these scouts on a troop basis distributed 10,000 circulars for the Belleville Community Chest, of which the Boy Scouts are one of the five Red Feather agencies. Members of the Boy Scouts and their adult leaders are carrying on world-wide movement (except in countries which are dominated by Communists). The movement was started in this country in 1910 when a troop was organized by Sir Baden Powell in Montclair. In 1916 a charter was granted to the growing movement by the Congress of the United States. The purpose of the movement, then as now, was to develop the character, citizenship, training and physical fitness.

In the intervening 42 years, 19 millions of boys have been members of the organization, and at the present time there are nearly 3,000,000 enrolled.

**Local Groups**

Scouting is a movement rather than an organization, in that the program is made available to existing institutions for them to use in their work with their boys, under their leadership, with guidance by a national basis. As a result, churches, synagogues, veterans organizations, fraternal and civic bodies, labor unions, industries and PTA organizations sponsor Cub Packs, Scout Troops, and Explorer Units.

Scouting is a movement rather than an organization, in that the program is made available to existing institutions for them to use in their work with their boys, under their leadership, with guidance by a national basis. As a result, churches, synagogues, veterans organizations, fraternal and civic bodies, labor unions, industries and PTA organizations sponsor Cub Packs, Scout Troops, and Explorer Units.

While national in scope, Scouting is always under local leadership in that local Councils supervise and coordinate the activities assigned to them by the National Council, which charters all local Councils.

Every institution which sponsors a Scouting unit names a representative to the local Council. To further facilitate the supervision and promotion of the work, Districts are organized. Belleville is divided into three districts by the Robert Treat Council, which serves Belleville, Irvington and Springfield.

The Boy Scouts' share of the Belleville Community Chest budget is the operation of the Council office. The national movement is supported by nominal dues paid by each member. Local expenses are paid by sponsoring institutions and raised by the troop and pack committees.

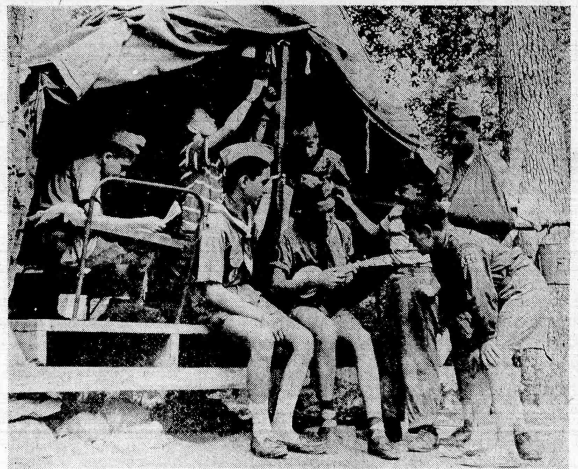
**C. M. Nutt, Chairman**  
The Belleville district is headed by Charles M. Nutt, ex-chairman and Elwood P. Russell, ex-chairman. The work of the district committee is carried on by six operating committees, the chairman of which is a member of the Council committee of the same name.

These district committees are: advancement, Henry Minsanin; sampling and activities, Larry E. Nease; finance, Walter Finch; health and safety, Lavton Cox; executive training, John Greulich; organization and extension, Robert Lawrence.

The Council committees determine policies and develop programs. The District committee carries out the program and policies of the local level.

**Each Unit Represented**  
Every institution which sponsors a scouting unit in Belleville is represented on the District Committee. In addition other citizens are elected as members-at-large on the District Committee.

In Belleville the committee members are: P. T. Milazzo, William Cullen, Mack Grady, Gene Reilly, Paul H. Thompson, Edward Ackerman, Henry Denison, Alfred Mazur, Sam Noto, Arthur Belkoff, Lester Skinner, William Tully, H. H. Willoughby, Charles Cassidy, Horace Baldwin, Frank Bridge, Jay Eric, Police George Kieran, Frank McFadden, Even H. Thomas and F. Douglas Wadsworth. Helping Cubmasters, Scout-



For the Boy Scouts themselves there is nothing quite like camping out, either at a Camporee or a permanent installation like Camp Mohican, operated by Robert Treat Council. No part of contributions to the Community Chest are used to provide for this activity, or for capital expenditures. The boys or the sponsoring organization pays for the camping and uniforms. Community Chest funds are used exclusively to help pay Belleville's share of the cost of operating the office of Robert Treat Council, which serves, Belleville, Irvington and Newark.

### Amateur Radio Group Will Have Simulated Emergency

Will Take Part in Nation  
Wide Test Of Communication  
Facilities; Open House 2 To 3

Members of the Belleville Amateur Radio Emergency Corps, under the leadership of Norman H. Thompson, Emergency Coordinator of the American Radio Relay League, will conduct a Simulated Emergency Test of the Belleville Community Emergency Plan.

Saturday the purpose of this plan is to provide the Belleville area with emergency communications facilities in the event of a disaster that might damage or incapacitate normal communications facilities.

The local Amateur Radio Emergency Corps (AREC) is a group of amateur radio operators who have volunteered their time and stations in the event of a disaster that might damage or incapacitate normal communications facilities.

The following are the names of the local radio amateurs who are planning to participate in the test: Edward Clegg, William Fisher, Pete Koustas, George Schmitt, Vern Sherman, Norman Thompson, Joseph Weiss, Fred Yost and Vince Schaefer.

**REPUBLICAN VETS HOLD MEETING**  
Harry N. Weeks, Treasurer  
Of County Organization, Is  
Chairman Here

The Belleville Chapter of the Republican Veterans League of New Jersey held their first meeting last week at the new headquarters of the Belleville Republican Committee at 563 Washington Ave.

Temporary chairman, Harry N. Weeks of 127 Linden Avenue, conducted the meeting, which was called to order by permanent organization and a regular staff of officers. Chairman Weeks, is treasurer of the Essex County Chapter of the organization. He stated that the "Republican Veterans League is standing four square behind the Republican ticket from top to bottom" and "that the time has come for the veterans to take their place in the affairs of the nation."

Rudolph Zoeller, Belleville Republican Chairman welcomed the veterans group and invited them to use the facilities of the local committee to the fullest extent. Mrs. Ruth Fredericks co-chairman of the Belleville Republican Committee and President of the Belleville Republican Women's Club also welcomed the veterans group.

The organization welcomes all veterans who are interested in good government to join their organization.

**Short-Lived Strike At  
Walter Kidde & Company**  
Members of Local 146, United Auto Workers, CIO, at the Walter Kidde Company, Inc., of Main Street on Tuesday at a mass meeting at the Belleville Elks Club, accepted a company offer of an across-the-board 10 cents per hour wage increase, and in a body returned to work. The contract between the company and the union expired on Monday night. A few employees jumped the gun and did not work Monday afternoon. The Union negotiation committee, company officials and Alan Weisenfeld, secretary of the State Mediation Board held a meeting Monday night at which time the 10 cent offer to counter the Union's demand for 12 cents was made. Tuesday morning the 950 Union members did not report to work until after the mass meeting and the favorable vote was taken.

**63 TEACHERS WILL HELP COMMUNITY CHEST CAMPAIGN**  
Many Who Live Out Of Town Will Join In House-To-Door Solicitation  
Sixty-three members of the faculty of Belleville schools have volunteered to serve in any capacity assigned to them by the Belleville Community Chest. The list of teachers shows that many of them reside out of town, but will give the extra effort to the Belleville Community Chest as their contribution to community service.

### Amateur Radio Group Will Have Simulated Emergency

Will Take Part in Nation  
Wide Test Of Communication  
Facilities; Open House 2 To 3

Members of the Belleville Amateur Radio Emergency Corps, under the leadership of Norman H. Thompson, Emergency Coordinator of the American Radio Relay League, will conduct a Simulated Emergency Test of the Belleville Community Emergency Plan.

Saturday the purpose of this plan is to provide the Belleville area with emergency communications facilities in the event of a disaster that might damage or incapacitate normal communications facilities.

The local Amateur Radio Emergency Corps (AREC) is a group of amateur radio operators who have volunteered their time and stations in the event of a disaster that might damage or incapacitate normal communications facilities.

The following are the names of the local radio amateurs who are planning to participate in the test: Edward Clegg, William Fisher, Pete Koustas, George Schmitt, Vern Sherman, Norman Thompson, Joseph Weiss, Fred Yost and Vince Schaefer.

**REPUBLICAN VETS HOLD MEETING**  
Harry N. Weeks, Treasurer  
Of County Organization, Is  
Chairman Here

The Belleville Chapter of the Republican Veterans League of New Jersey held their first meeting last week at the new headquarters of the Belleville Republican Committee at 563 Washington Ave.

Temporary chairman, Harry N. Weeks of 127 Linden Avenue, conducted the meeting, which was called to order by permanent organization and a regular staff of officers. Chairman Weeks, is treasurer of the Essex County Chapter of the organization. He stated that the "Republican Veterans League is standing four square behind the Republican ticket from top to bottom" and "that the time has come for the veterans to take their place in the affairs of the nation."

Rudolph Zoeller, Belleville Republican Chairman welcomed the veterans group and invited them to use the facilities of the local committee to the fullest extent. Mrs. Ruth Fredericks co-chairman of the Belleville Republican Committee and President of the Belleville Republican Women's Club also welcomed the veterans group.

The organization welcomes all veterans who are interested in good government to join their organization.

**Short-Lived Strike At  
Walter Kidde & Company**  
Members of Local 146, United Auto Workers, CIO, at the Walter Kidde Company, Inc., of Main Street on Tuesday at a mass meeting at the Belleville Elks Club, accepted a company offer of an across-the-board 10 cents per hour wage increase, and in a body returned to work. The contract between the company and the union expired on Monday night. A few employees jumped the gun and did not work Monday afternoon. The Union negotiation committee, company officials and Alan Weisenfeld, secretary of the State Mediation Board held a meeting Monday night at which time the 10 cent offer to counter the Union's demand for 12 cents was made. Tuesday morning the 950 Union members did not report to work until after the mass meeting and the favorable vote was taken.

**63 TEACHERS WILL HELP COMMUNITY CHEST CAMPAIGN**  
Many Who Live Out Of Town Will Join In House-To-Door Solicitation  
Sixty-three members of the faculty of Belleville schools have volunteered to serve in any capacity assigned to them by the Belleville Community Chest. The list of teachers shows that many of them reside out of town, but will give the extra effort to the Belleville Community Chest as their contribution to community service.

### Short-Lived Strike At Walter Kidde & Company

Members of Local 146, United Auto Workers, CIO, at the Walter Kidde Company, Inc., of Main Street on Tuesday at a mass meeting at the Belleville Elks Club, accepted a company offer of an across-the-board 10 cents per hour wage increase, and in a body returned to work. The contract between the company and the union expired on Monday night. A few employees jumped the gun and did not work Monday afternoon. The Union negotiation committee, company officials and Alan Weisenfeld, secretary of the State Mediation Board held a meeting Monday night at which time the 10 cent offer to counter the Union's demand for 12 cents was made. Tuesday morning the 950 Union members did not report to work until after the mass meeting and the favorable vote was taken.

### 63 TEACHERS WILL HELP COMMUNITY CHEST CAMPAIGN

Many Who Live Out Of Town Will Join In House-To-Door Solicitation

Sixty-three members of the faculty of Belleville schools have volunteered to serve in any capacity assigned to them by the Belleville Community Chest. The list of teachers shows that many of them reside out of town, but will give the extra effort to the Belleville Community Chest as their contribution to community service.

**CO. BLOOD BANK VISITS HIGH SCHOOL TOMORROW, 2 TO 5**  
Red Cross Cites Willys Agency Employees For 50 Per Cent Participation To Defense Bank

The Essex County Blood Bank will hold a session at the High School from 2 to 5 o'clock tomorrow, with employees of the Belleville Westinghouse plant furnishing the bulk of the donors, according to Mrs. Peter Wendel, chairman of the blood program of the Belleville Chapter, American Red Cross. The need for blood continues to rise and residents of Belleville are invited to join the Westinghouse employees in giving blood on Friday.

Mrs. Wendel points to the effort of one Belleville business concern which did a wonderful job of recruitment for the last Defense Blood Donor assembly at the Elks Club. Of the six people on the staff of the Belleville-Nutley Willys, Inc., at 320 Washington Avenue, Donald Reed, Mrs. Helen Smith and Robert Smith all participated. This is 50 percent of the employees, Stanley W. Smith of 159 Fairway Avenue, is president and general manager of the Willys agency.

**Special Donors**

Mrs. John Walsh, in charge of emergency recruitment of blood donors, secured three special "walking" donors, last week, to provide needed blood for a young couple. Mrs. Walsh, 672 Belleville Avenue.

Mrs. Regina Bucken of 58 Fairview Avenue, Mrs. Florence Flannery of 150 Carpenter Street and George Lukowiak of 831 Mill Street answered the call and each gave a pint of blood to hasten Mr. Caruso's recovery from a serious illness.

Mrs. Walsh points out that blood is today's most amazing medicine, a miracle worker, never then penicillin. A pint of blood can do many lifesaving jobs. She suggests you give your pint, if you get the chance.

**Faculty Honors New Principal At Clifton Dinner Yesterday**

The faculty of School No. 3 entertained the new principal of the school and his wife, Mr. and Mrs. Paul Jones, at a welcoming dinner at Gene Boyle's in Clifton last week. Miss Lena Dunlap acted as Mistress of Ceremonies.

Formerly a teacher in Belleville High School and principal of School No. 1, Mr. Jones returned to Belleville after nearly two years' work as director of education in the armed services at Chemical Corps School, Fort McClellan, Alabama.

**Struck by Truck**  
Richard Britland, 8-year-old son of Mr. and Mrs. Gordon T. Britland of 125 Tappan Avenue, was seriously injured on Saturday when hit by a truck near the intersection of Holmes Street and DeWitt Avenue. George Marks of 145 Midland Avenue, Newark, driver of the truck, told police that the boy dashed into the street against the side of the moving vehicle. He was rushed to St. Mary's Hospital, Passaic in the town ambulance.

### CO. BLOOD BANK VISITS HIGH SCHOOL TOMORROW, 2 TO 5

Red Cross Cites Willys Agency Employees For 50 Per Cent Participation To Defense Bank

The Essex County Blood Bank will hold a session at the High School from 2 to 5 o'clock tomorrow, with employees of the Belleville Westinghouse plant furnishing the bulk of the donors, according to Mrs. Peter Wendel, chairman of the blood program of the Belleville Chapter, American Red Cross. The need for blood continues to rise and residents of Belleville are invited to join the Westinghouse employees in giving blood on Friday.

Mrs. Wendel points to the effort of one Belleville business concern which did a wonderful job of recruitment for the last Defense Blood Donor assembly at the Elks Club. Of the six people on the staff of the Belleville-Nutley Willys, Inc., at 320 Washington Avenue, Donald Reed, Mrs. Helen Smith and Robert Smith all participated. This is 50 percent of the employees, Stanley W. Smith of 159 Fairway Avenue, is president and general manager of the Willys agency.

**Special Donors**

Mrs. John Walsh, in charge of emergency recruitment of blood donors, secured three special "walking" donors, last week, to provide needed blood for a young couple. Mrs. Walsh, 672 Belleville Avenue.

Mrs. Regina Bucken of 58 Fairview Avenue, Mrs. Florence Flannery of 150 Carpenter Street and George Lukowiak of 831 Mill Street answered the call and each gave a pint of blood to hasten Mr. Caruso's recovery from a serious illness.

Mrs. Walsh points out that blood is today's most amazing medicine, a miracle worker, never then penicillin. A pint of blood can do many lifesaving jobs. She suggests you give your pint, if you get the chance.

**Sullivan Association Makes Plans For Card Party**

The Harry J. Sullivan Association, at a meeting held recently completed plans for its third annual card party to be held at the Belleville Elks' Auditorium on Wednesday evening, October 29th at 8:30 o'clock.

Regina Cogan, of 298 Union Avenue, was selected as general chairman for the affair and she will be assisted by the following committee chairman:

Table prizes, Whitford Portenstine; door prizes, Anthony Domick; non-players, John Burke; tickets, Albert Lovack; refreshments, Bridget Lowack; floaters, Gladys Sullivan; reception, Jeanne Abato; tables, Doris Hammond and publicity, Charles H. Fredericks.

Tickets for the affair may be obtained from Miss Cogan or members of the Committee.

**Officers' Meeting**  
Officers and teachers of Belleville Reformed Church will meet at the chapel Friday evening at 8 o'clock. On Sunday, Rev. John A. Struyk, pastor will deliver a sermon on "God's Power in Human Everyday Living". Everyone is invited to visit the old church.

**PLAN HALLOWEEN WINDOW PAINTING CONTEST HERE**  
Prizes Of Defense Bonds And Stamps For Best Art Work; Diehl To Supervise

The Belleville Recreation Department is planning a Halloween Celebration again this year for the children of the town. The contest on the committee are: William C. Smith, James R. Lampman, Blaine Gibbs, Ralph Baker, Raymond Ward, Raymond Smith, Edward Berlinki, Robert Cook, Elmer S. Hyde, Mrs. Nicholas Galbraith, Paul Weiss, William Travers, Mrs. Mauries Conway, Mrs. Mary Virtue, Mrs. Catherine Managher, Mr. James Dunn, Mrs. Gertrude Dillon and Mrs. Mary Kierman.

The program will consist of the painting of the store windows, for which there will be a first prize of a \$50 Defense Bond, \$25 Defense Bonds for second prize, and Ten Dollars in Defense Stamps for third prize. All paints, brushes and materials will be furnished by the Recreation Department and all sketches and paintings will be under the supervision of P. W. Diehl, art instructor of Belleville High School. The Halloween Window Painting contest will be exclusively to the merchants along Washington Avenue.

There will be an afternoon party for the children up to ten years of age, Friday afternoon, October 31st, from 3 to 4 o'clock at the Belleville Elks Club Auditorium. Refreshments will consist of ice cream and cookies with a program of singing. All children must come in costume and there will be prizes given for the best costumes. The most original and funniest costumes. There will be an evening party for the children of eleven years and up, but the committee will announce the plans of this party at a later date.

**Attends Wheaton College**  
Miss Diane Sandra Nelson, daughter of Mr. and Mrs. Adolf Nelson of 82 Branch Brook Drive, is enrolled as a freshman at Wheaton College, Wheaton, Ill.

### California's Gov. Earl A. Warren To Speak Here On 20th

### Vice-Presidential Candidate In 1948 Will Make One Of Few Jersey Appearances At Belleville High

Governor Earl A. Warren of California, who four years ago was the Republican candidate for vice-president of the United States, will speak at Belleville High School on behalf of the Republican National ticket, on Monday, October 20 as part of his whirlwind tour of the East in the closing weeks of the presidential election campaign. Although his complete schedule for his speaking tour, is not known, it is known that Governor Warren plans only a few such speeches in New Jersey.

A committee headed by Mayor J. Tully, with Rudolph P. Zoeller, Republican County Committee Chairman and Freeholder Candidate Elwood P. Russell, as vice-chairman, expects to complete plans for the staging of the address and the welcoming of Governor Warren to town. They are being aided by Commissioners Elmer S. Hyde and Joseph King, the Republican County Committee, the Republican Veterans League, and the Women's Republican Club.

Present plans call for brief remarks from Alexander Mattiuri, Republican Candidate for Congress from the 10th district, and a member of the Freeholder staff, other than Mr. Russell. Because Senator Alexander H. Smith will speak in Nutley the day before, it is improbable that this phase of Republican state will be represented on the speaker's platform.

### BOARD AND LAY COMMITTEE AWAIT ADDITIONAL DATA

Walter Kidde Constructors, Indicate That Division Ave. Property Can Be Made Usable

Members of the Board of Education met with representatives of the Lay Advisory Committee and A. J. Rinn, vice-president of the Board of Walter Kidde Constructors, Inc., Tuesday night at School No. 8 to review a preliminary report on the possible use of land adjacent to the Municipal Stadium as a site for a new secondary school building. A further report based on the questions asked of Mr. Rinn, will be made by the Walter Kidde Constructors, Inc., additional data to the Board of Education. The Board spent \$400 for soundings on the property and the Walter Kidde price is \$900 for engineering advice and report.

The fact that the site has not been ruled out and that further study is being given to the Kidde report indicates that the site has not been ruled out as a result of the opinion of the engineers.

While the contents of the report are not being made public until the supplement is also on file, a spokesman of the Board indicated that the Kidde report is favorable. Since the Lay Advisory Committee had originally recommended the site, and pressed for its use, the Board decided to consult just before making the full report public.

### PLAN HALLOWEEN WINDOW PAINTING CONTEST HERE

Prizes Of Defense Bonds And Stamps For Best Art Work; Diehl To Supervise

The Belleville Recreation Department is planning a Halloween Celebration again this year for the children of the town. The contest on the committee are: William C. Smith, James R. Lampman, Blaine Gibbs, Ralph Baker, Raymond Ward, Raymond Smith, Edward Berlinki, Robert Cook, Elmer S. Hyde, Mrs. Nicholas Galbraith, Paul Weiss, William Travers, Mrs. Mauries Conway, Mrs. Mary Virtue, Mrs. Catherine Managher, Mr. James Dunn, Mrs. Gertrude Dillon and Mrs. Mary Kierman.

The program will consist of the painting of the store windows, for which there will be a first prize of a \$50 Defense Bond, \$25 Defense Bonds for second prize, and Ten Dollars in Defense Stamps for third prize. All paints, brushes and materials will be furnished by the Recreation Department and all sketches and paintings will be under the supervision of P. W. Diehl, art instructor of Belleville High School. The Halloween Window Painting contest will be exclusively to the merchants along Washington Avenue.

There will be an afternoon party for the children up to ten years of age, Friday afternoon, October 31st, from 3 to 4 o'clock at the Belleville Elks Club Auditorium. Refreshments will consist of ice cream and cookies with a program of singing. All children must come in costume and there will be prizes given for the best costumes. The most original and funniest costumes. There will be an evening party for the children of eleven years and up, but the committee will announce the plans of this party at a later date.

**Attends Wheaton College**  
Miss Diane Sandra Nelson, daughter of Mr. and Mrs. Adolf Nelson of 82 Branch Brook Drive, is enrolled as a freshman at Wheaton College, Wheaton, Ill.

### Bellboys Who Vanquished Bloomfield And Who Await Nutley Game on Saturday



Members of the Belleville High School football team which last week won its big game from Bloomfield 10 to 7 and which takes on another neighbor-rival, Nutley, at Municipal Stadium on Saturday; are left to right: front row: Tom Dolan, Larry D'Onofrio, Anthony Brocato, Frank Scarpelli, Don Miller, Bill Dunleavy, Tom Appicella, Ed Gray, Sergio Rinaldi, Dick Ziph; second row: Nick Vara, Carl Colucci, Bob Doyle, Don Pomponio, Terry Gahr, John McCabe, Ray Marone, Rocco Cafone, Bill Sobia, Bob Antem, Al Zaleski, and Nick Cecot; third row: Coach Ed Berlinki, Bob Reid, Ken Jacobson, Bob Cook, Tom Intindola, Bill Chapman, Pat Caruso, Rognie Worthington, Mike Dal Bon, Ed Kosinski, Ed Buccarelli, Dave Olphin, Evan Thomas, Jr., Ted Duva, Bill Rock and Line Coach Herman Wislic.

### HOMEMADE BOMB BLOWS OFF FINGER

Gerald Gilroy Was Trying To Find Out Why It Didn't Explode When Fuse Burned

Gerald Gilroy, 16, of 108 William Street, had his right index finger amputated at the second knuckle, at Mountside Hospital, on Monday after a home-made bomb exploded in his hand when he tried to find out why it didn't explode. The three boys took the explosive to a vacant lot at the rear of the boiler room of the institution and lit the fuse. When it did not go off as expected, Gilroy picked it up and shook it. The explosion mutilated the index finger.

Robert Miller of 131 Carpenter Street, whose home adjoins the vacant lot, took Gilroy to the hospital.

**Aboard Carrier**  
Recently participating in Operation Main Base aboard the large aircraft carrier USS Franklin D. Roosevelt was Frank V. Pettinato, USN, son of Mr. and Mrs. Pettinato of 57 Overlook Avenue.







## KATHERINE VALLO WEDS ON BIRTHDAY

### Becomes Bride Of Mervin Cook Jr. In Nutley Church; Maine Honeymoon For Couple

Miss Katherine Vallo, daughter of Mr. and Mrs. Charles Vallo of 126 Cedarhill Avenue, was married to Mervin Cook Jr., son of Mrs. Henrietta Cook of 107 Union Avenue, in Holy Family Church, Nutley, on Sunday, the date of the bride's 21st birthday. Father Blake performed the ceremony. A reception was held at the Penguin Club in Allwood.

Miss Kay Rogelio of Belleville served as maid of honor. Bridesmaids were Miss Pat Stringer of Cedar Grove, and Miss Pat Davis of Newark. Serving as best man was Teddy Del Grosso of Belleville and those ushering were Frank Dennis of Belleville and the bride's brother, Jerry Vallo, of Nutley.

The bride's gown was of Chantilly lace fashioned with a illusion of a mother of pearl. Her finger-ring veil fell from a matching skull cap.

Both bride and groom are graduates of Belleville High School. Mrs. Cook is employed by Equitable Life Insurance Co. of New York and her husband is with the Public Service of Belleville. During World War II, Mr. Cook served for three years with the U. S. Marines. The couple are honeymooning in Maine.

## Ada Scaranio Named Exhibition Head Of Bloomfield Art League

Mrs. Ada Scaranio of Belleville has been named exhibition chairman of the Bloomfield Art League for the forthcoming year. She will head the American Art Week Exhibition, the first to be held by the league this season. It is open to all league members residing in Belleville and will offer cash prizes.

An artist of repute in Essex County, Mrs. Scaranio has been the recipient of many art awards and has participated in numerous art exhibitions. The Art League is offering a series of six art demonstrations this season, two in water colors, two in oils, one in black and white, and one in discussion lecture. For information concerning individual or individual demonstrations, call Bloomfield 2-4810.

## J. F. de Groat, O. D. Optometrist

Hours  
Mon., Wed. & Fri.  
2 to 5 - 7 to 8  
And by Appointment

Telephone - Belleville 2-5605 J

Joseph P. Goy  
Refrigerator, Wood and Metal  
Refrigerators, Freezers, Cabinets  
Painting and Decorating

10 Little Street, Belleville



**Humpty Dumpty**  
Sat on a Wall  
Humpty Dumpty  
Had a Bad Fall...  
Poor Humpty  
Didn't look

in the  
**YELLOW PAGES**  
of the telephone book

Humpty could have found:

Insurance  
Crutches  
Physicians  
Osteopaths  
Chiropractors  
Hospitals  
Convalescent Homes  
Lawyers

NEW JERSEY BELL  
TELEPHONE COMPANY

## Orange Blossoms For Two Young Women in Week-End Ceremonies



Mrs. Allan McAllister

## Margaret Dillon And Allan McAllister Wed In Nutley

Belleville Couple Are On  
Honeymoon Trip Through New  
England States; To Live Here

The marriage of Miss Margaret E. Dillon, daughter of Mrs. Anna C. Dillon of 266 Washington Avenue and the late William J. Dillon, to Allan McAllister, son of Mr. and Mrs. William E. Siegel of 116 Washington Avenue, took place Sunday at Holy Family R.C. Church, Nutley, with Rev. Francis Blake officiating. A reception followed at the Franklin Casino.

Mrs. Edward J. Hin of Haver attended the bride as matron of honor. Bridesmaids were Mrs. Walter Sincos of Belleville, sister of the bride-groom and Miss Jeanne Verian also of Belleville. Jack Meyer of Belleville served as

best man while Edward J. Hin and Walter Sincos ushered.

The bride, escorted by George Cundari of Nutley, wore a gown of chantilly lace and satin. Her finger-ring veil was held by a matching head-piece. She carried a white orchid on a prayer book. Her matron of honor was attired in a burgundy velvet gown with a matching hat. The bridesmaids wore similar gowns in cotton blue and they all carried old fashioned bouquets.

Both bride and groom attended Belleville High School. Mrs. McAllister is a teller at the Bank of Nutley, and Mr. McAllister is employed by Wallace & Tiernan Co. of Belleville. After a two weeks honeymoon through the New England states, the couple will reside at 266 Washington Avenue.



Mrs. Donald Walsh

## Donald Walsh Marries Miss Janet R. Wallace Of Deal

Wedding Takes Place In St.  
Mary's Church Of Deal On  
Sunday; Have 5 Attendants

Miss Janet Regina Wallace, daughter of Mrs. James Wallace of Deal and the late James Wallace, became the bride of Donald W. Walsh, son of Mrs. James Walsh of 159 Malone Avenue and the late James Walsh, in St. Mary's Catholic Church, Deal, on Sunday. Rev. George A. Walsh, pastor of the church, performed the ceremony. A reception followed at the Homestead Country Club in Spring Lake Heights.

Given in marriage by her brother, James V. Wallace, the bride was attired in a shimmering length of white lace and nylon tulle over satin. The strapless fitted bodice was of lace and the tulle skirt was fashioned with lace insets. Her matching lace jacket had long pointed sleeves and a small collar. A fingertip

illusion veil was attached to a helmet cap of embroidered net and seed pearls.

Mrs. Elizabeth Rathjens of Spring Lake was matron of honor. Serving as bridesmaids were Miss Elinor Green of Eatontown and Miss Evelyn Woolley of Neptune. James J. Walsh, Jr., of Millburn was his brother's best man and John T. Wallace of Elberon and James Morgan of Irvington served as ushers.

The bride is a graduate of Asbury High School. Mr. Walsh was graduated from Belleville High School and attended Seton Hall University. He is now serving with the U.S. Navy as a 2nd class yeoman, stationed at a naval air base in Oceania, Virginia.

After a wedding trip to New England and Canada, the newlyweds will make their home at Virginia Beach, Virginia.

Dr. D'Angelo. A party at the home of Mr. and Mrs. Shaw of Van Rye place, followed the dinner.

Mr. and Mrs. Frank Bridge of 57 Street spent a weekend recently visiting Mrs. Bridge's mother, Mrs. J. H. Molyneux of Tinton Falls, N. J. Mrs. Molyneux is a former resident of Nutley.

The Fellowship Circle will hold a meeting next Tuesday evening at the home of Mrs. M. J. Atkinson of 91 Bremond Street. Mite boxes will be collected and Miss Gedeon will give the first installment of the study book on Africa.

Arene Chapter No. 73 of the Eastern Star will hold a rummage sale at Christ Episcopal Church, Washington Avenue, on October 20 and 21, beginning at 8:30 a.m. Mrs. H. W. Earl is chairman for the event, assisted by Mrs. Lillian Earl and Mrs. Emmy Zimmermann.

**EAST NUTLEY GARAGE**  
C. A. FANELLI, Prop.  
Body and Fender Repairing  
Expert Auto Repainting  
Phone: Nutley 2-5958  
55 Washington Avenue, Nutley, N. J.

**STOP RUSTY RED WATER**  
USE  
**MICROMET**  
SEE YOUR PLUMBER OR PAINT DEALER  
FOR FREE BOOKLET  
WRITE TO: CALCON INC.,  
38 HAHAN BLDG., PITTSBURGH 30, PA.

**ANNOUNCING**  
The Opening October 20th of a  
**NURSES REGISTRY**  
Nurses Are Invited to Register With Us  
**Physicians Exchange**  
And Nurses Registry  
IDA C. HARTMAN  
438 Franklin Avenue, Nutley NU 2-4548

**LET'S GET ACQUAINTED...**  
Enjoy "Food At Its Best" At A Very Reasonable Price  
**RUTGER'S RESTAURANT**  
194 Washington Ave. Near Rutgers, Belleville, N. J.

Breakfast - Luncheon - Dinner  
— Seafood — Broiled Choice Steaks & Chops —  
Special Feature:  
Roast Turkey, Beef, Fresh Ham, Pastrami,  
Corned Beef, Virginia Ham  
Smoked Tongue to take out sliced to your needs.  
We Cater To Any Occasion.  
Call BE 2-1010

## Congregation Sisterhood To Observe 30th Year Tuesday

A meeting of the Sisterhood of Congregation A. A. A. will take place Tuesday at the synagogue, 317 Washington Avenue. This will mark the 30th anniversary of the Sisterhood and there will be presentation of pins for 25 year members.

Guest Speaker will be Mrs. Sarah Kussy, noted civic leader and founder of the National Hadassah and Women's League of United

Synagogues of America. Hostesses for the evening will be Mrs. Murray Canter and Mrs. Murray Steinhauser.

## Little Zion Fall Tea

The Willing Workers Guild of the Little Zion U.A.M.E. Church, will hold its Annual Fall Tea and Musical Program in the Veterans' Hall on Sunday, October 19, from 4 to 7 p.m. Mrs. Morris Sloan is chairman for the affair and Mrs. Hortense Tate will serve as mistress of ceremonies. Congressman Peter Rodino will deliver an address, followed by a talk by Rev. Mary Ferrar, pastor of the church.

## Administrative Assistant

Sergeant Leon F. Pol, son of Mrs. Mary Pol of 79 Gless Avenue and the late Mr. Pol, is serving as administrative assistant in the Middletown, N. Y. headquarters of the Eastern Army Anti-aircraft Command. Assigned to this command last October, Sgt. Pol entered the Army in January, 1949. He received basic training at Fort Bliss, Texas.



Are there leaks in your roof? Many an old house has rotted from the top, as trees do. Don't overlook rot because you don't see it.

Is the paint peeling, opening up the wood beneath to penetrating rains?

Is your home not yet insulated, weatherproofed?

See your contractor about needed repairs, . . . then see us about an economical loan to help cover the cost.

We make F. H. A. Loans at reasonable cost; and if you wish, repayable over a period up to three years.

## PEOPLES NATIONAL BANK AND TRUST COMPANY

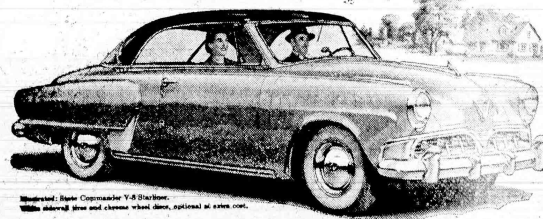


237 WASHINGTON AVENUE

BELLEVILLE, NEW JERSEY

Parking for Customers  
Adjoins the Bank Building

## Save gas in style mile after mile Own America's smartest thrift car



## Get a jet-streamed new Studebaker now

COMMANDER V8 OR CHAMPION

Eleven exciting body types including the Starliner "hard-top"

Spacious interior dimensions! Superb exterior proportions!

Deep-bedded riding comfort! Marvelous handling ease!

See—and try—and buy—a Studebaker!

All models offer Studebaker Automatic Drive or Overdrive—anti glare-reducing tinted glass—air-exit seats.

FORT MOTORS CO. OF N. J., INC.

25 WASHINGTON AVE., BELLEVILLE, N. J.



# MABEL HERZOG IS AFFIANCED

Belleville Girl's Troth To Richard Kacerek Of Newark Is Announced By Her Parents

Mr. and Mrs. Carl Herzog of 21 Crescent Terrace announce the engagement of their daughter Mabel to Richard Kacerek, son of Mr. and Mrs. Frank Kacerek of Newark.

Miss Herzog attended Belleville High School and is presently employed by P. Ballantine & Sons. Her fiancé, who attended East Side High School, is with R.C.A. in Harrison.

No date has been set for the wedding.

# MISS JULIAN'S NUPTIALS HELD

Little Church Around The Corner Is The Scene Of Her Wedding To Richard Hermann



Mrs. Richard Hermann

The marriage of Miss Jeannette L. Julian, daughter of Mr. and Mrs. Emilie Julian of 33 Perry Street, to Richard Charles Hermann, son of Mr. and Mrs. John Hermann of 46 Perry Street took place Friday in the Little Church Around the Corner in New York City. A reception was held at the Mayfair Farms, West Orange.

Miss Hazel Ann Martin was maid of honor. The groom's father served as best man.

The bride wore a cocktail length dress of silk faille trimmed with iridescent sequins. She carried a cascading bouquet of lilies of the valley and gardenias. The maid of honor wore a coral tulle dress and carried a bouquet of cactus dahlias.

# MISS SPAGNOLETTI IS CHURCH BRIDE

Her Marriage To Anthony De Santis Is Followed By A Reception In Newark Hotel



Mrs. Anthony De Santis

Miss Loretta Antoinette Spagnoletti, daughter of Mr. and Mrs. Biagio Spagnoletti of 76 Magnolia Street, became the bride of Anthony C. De Santis, son of Mr. and Mrs. Daniel De Santis of 467 Delaware Avenue, Newark in St. Anthony's Church Sunday. A reception followed in the main ballroom of the Military Park Hotel Newark.

The bride was attired in a gown of imported French blue-white, rose-point lace and rhinestones with a fitted bodice and a bouffant skirt ending in a six-yard scalloped train. Her ten-yard hand-draped veil fell from a headpiece of pearls and rhinestones. She carried white orchids on a white, mother of pearl prayer book.

Mrs. Ralph Lembo, sister of the bride, served as matron of honor. She wore an aqua gown of nylon tulle and velvet, and carried a snowball bouquet of nylon tulle with orchids.

Bridesmaids included Miss Antoinette Spagnoletti, another sister of the bride; Miss Diana De Santis, sister of the groom; Miss Lucy Fragnito, cousin of the bride; Miss Clara Borrello, cousin of the groom; Miss Barbara Roselli, and Miss Betty Cirocco. The Misses Roseann Lembo, Josephine, nieces of the bride and groom, respectively, served as flower girls.

Best man was Albert Sorrentino. Those ushering were John Spagnoletti, brother of the bride, Joseph Ferrara, Frank Marano, Nick Capra, Anthony Chianese and Anthony Sierano.

The bride was graduated from Belleville High School and is employed as a secretary at the White House Laundry, owned by her father. Mr. De Santis is an alumnus of Barringer High School, Newark, and Rutgers University College of Pharmacy. He is employed as a pharmacist by the Progress Pharmacy of Belleville.

After a month's motor trip through the southern states and Cuba, the newlyweds will make their home at 76 Magnolia Street.

# Will Hold Reception For Msgr. DiLuca Monday

Msgr. Anthony DiLuca, pastor of Holy Family church, ended his four-month holiday in Italy and, after a pilgrimage to the shrine of Our Lady of Fatima, in Portugal, takes off today from Lisbon for New York where he will arrive at Idlewild Airport, shortly before noon on Saturday, to be met by a delegation of his Belleville and Nutley parishioners. He bears a special Papal benediction, given by Pope Pius XII to the congregation and the school children of Holy Family parish.

A gala reception in the school auditorium, on Monday night, in which all of the parish societies will take part, will welcome Msgr. DiLuca home.

School No. 9 PTA will have a Friendship Night meeting Tuesday evening at 8 o'clock. This will be an opportunity for parents to meet their children's teachers, and to inspect the building. The meeting will honor the first and second grade mothers and teachers, with the 8th grade mothers acting as hostesses. A film, "Your Garden State Parkway" will be shown.

Fewsmith Memorial Presbyterian Church will sponsor its annual bazaar on Thursday and Friday, October 16 and 17, comprised of various kinds of food gifts, Christmas cards, and other items. A turkey dinner will be served Thursday evening from 6:30 to 7:30 o'clock. On Friday evening there will be a cafeteria supper. Tickets may be obtained at the door, or advance reservations can be secured by contacting Mrs. Harold Snook of 56 Belmore Street.

Brownie Troop No. 18 of School No. 5, started their season with a "Cookout" at the Belleville Stadium picnic grounds. Thursday, Brownies present were: Ellen Chan, Joyce Dring, Jeanne Pawcett, Kathryn Nasson, Carolyn Tietze, Nancy Steffensen, Katrina Seasholtz, Suzanne Quimby, Gloria Horvacki, Ellen Seely, Kathleen Plaugen, Pamela Frasier, Dorothy Ladden, Janet Milgate, and Ellen Todd.

A Rummage Sale will be held at the Woman's Club, on Friday and Saturday, October 17 and 18 from 9:30 a.m. to 4 p.m., under the direction of the Ways and Means Committee of which Mrs. Ruel E. Daniels is chairman. Members are requested to leave articles for the sale at the Clubhouse on Thursday.

Mrs. Mabel Nowakowski, asst. manager of the May Moon Co. of 175 Washington Avenue, has been promoted to the position of manager of the new Styretown store of the company. Her husband, in honor will be given by her co-workers Saturday evening at the Fox-Hills Mrs. Nowakowski resides at 23 Bridge Street.

# Rabbi Schwartz Speaks On Succoth At Club Meeting

A program of social and cultural activities took place at Tuesday-night's meeting of the Mr. and Mrs. Club at Congregation A.A.A. social hall. Rabbi Leo Schwartz delivered an address on the history and observance of Succoth, the week's holiday that began last Friday.

An entertainment program followed, conducted by Mrs. Magnus, in the absence of Chairman Een Hirschberg. Refreshments were served by Zenda Gally, hostess for the evening. The next meeting of the club will take place October 21, highlighted by a talk by Dr. Joseph Winter, author and psy. chairist.

# 'blue coal' Abbey Coal Co.!

Where's Elmer . . .



... using good horse sense in choosing an eating place where quality foods and purse-pleasing prices prevail!

**FRANKLIN CASINO**  
BAR-RESTAURANT  
338 FRANKLIN AVE.  
BETWEEN CHURCH AND BELLEVILLE  
BE-2-2111

**UNIVERSAL FOOD MARKETS**

595 BROAD ST., NEWARK  
Open Wednesday Nights Until 9  
250 CENTRAL AVE., ORANGE  
176 LINCOLN ST., E. ORANGE

620 St. George Ave., Linden  
6411 Park Ave., W. New York  
146 Main St., Hackensack  
341 Clifton Ave., Clifton  
719 Bergen Ave., Jersey City  
16 W. Palisade Ave., Englewood

1020 BERGEN ST., NEWARK  
FRELINGHUYSEN AVE., ELIZABETH  
Opposite Durant Building  
524 WASHINGTON AVE., BELLEVILLE

**BIG FALL CANNED FOOD HARVEST**

MON AND SAVE!

Clear the pantry shelves and get set to stock 'em with the biggest, money-savingest values your food dollars ever bought. Yes, we're talking about the outstanding canned food buys you'll find at UNIVERSAL during our spectacular Canned Food Harvest of national brands. Come in today.

**WELCH PURE GRAPE JUICE**  
24-oz. bottle 33c

**SCOTT TOILET TISSUE**  
10c

**FIRESIDE MARSH-MALLOW**  
14 oz. Pliofilm Bag 29c

**UNIVERSAL FRESH ROASTED COFFEE**  
1-lb. bag 81c

**While They Last! INSTANT MAXWELL HOUSE COFFEE**  
Reg. \$1.55 Value Less Special "25c Deal and Our Bonus"  
6 oz. jar 1.23

**IMPORTED GREEK STRING FIGS** 1-lb. cello 33c  
**Queen Elizabeth Norwegian Brining Sardines** 35-oz. can 23c  
**EMPEROR BRAND SOLID PACK WHITE MEAT TUNA** 5-lb. can 31c  
**Dates** 1-lb. box 41c  
**GLOBE FRESH ROASTED COFFEE** 1-lb. bag 79c  
**WHEAT GERM** 12-oz. 28c  
**SALAD DRESSING** 32-oz. 49c  
**MAYONNAISE** 16-oz. 37c  
**CAKE MIXES** 35c  
**Devil's Food or Silver Cake**  
**H.O. CREAM** 16-oz. 26c  
**Farina** 16-oz. 19c, 26c, 30c  
**ADOLPH'S MEAT TENDERIZER** 49c  
**MAKES ALL MEAT TENDER!** (See ad.)  
**NABISCO RITZ Crackers** 1-lb. 35c  
**NABISCO CHOCOLATE GRAHAMS** 28c  
**SUNSHINE HI HO Crackers** 1-lb. 35c  
**SUNSHINE CHOCOLATE CRUNCH COOKIES** 39c  
**SWEET SOAP** 3-lb. 31c  
**BULB DOG** 9c  
**Bluing** 9c  
**Starch** 21c  
**Kleenex** 200's 2/31c, 300's 2/23c  
**Fab** 29c, giant 69c

**CRISCO** 3 lb. can 77c

**SCHIMMEL'S PURE STRAWBERRY PRESERVES** 1-lb. jar 35c

**FARLEYS** Black-Glory Jellies, Spice Jelly Drops, Assorted Giant Jellies, Orange Slices, 2-lb. Poly. ethylene Bag 39c

**Complete line of Fresh Fish & Seafood**

**OPEN TONIGHT UNTIL 9 . . . FRIDAYS 'TIL 10**

Other Days 8 A. M. to 6 P. M.

Grocery prices effective Oct. 9 to Oct. 15. All other departments Thursday, Friday, Saturday. We reserve the right to limit quantities. Not responsible for typographical errors.

**DAIRY FOODS**

SAVE 10% on your FAVORITE COFFEE

USE COUPON ON SELECTED EVERY Pkg. OF GOOD LUCK 28c

the TABLE magazine

**UNIVERSAL Grade "A" Medium White EGGS** 63c

**CHEESE** 1-lb. 75c  
BORDEN'S Cocktail Spreads: Pimento, Olive-Pimento, Relish, Pineapple, 5-oz. jar, 23c

**FROZEN FOODS**

Blue Gumbo Orange Jelly 2-lb. can 25c  
Birds Eye Chopped Salsich 14-oz. pkg. 18c  
Birds Eye Green Peas 17-oz. pkg. 18c  
Birds Eye Chicken Pot Pie 8-oz. pkg. 18c  
Pineapple-Waffles 6-oz. pkg. 14c

**Fruit & Vegetables**

Your choice Vine Ripped California Cantaloupes or Honeydews 10c lb.  
California Carrots, large bunch 10c

**HARVEST VALUES**

Lima Beans . . . 8-oz. 15c  
Diced Beets . . . 8-oz. 8c  
Diced Carrots . . . 8-oz. 10c  
Cherries . . . 8-oz. 18c  
Fruits for Salad . . . 8-oz. 20c  
Pears . . . 12-oz. 16c  
Corned Beef . . . 12-oz. 49c  
Tomato Juice . . . 1-lb. 11c

**NEW JOY** 69c

**LIPTON TEA** THE BRISK TEA 68c  
**LIPTON TEA BAGS** THE BRISK TEA pkgs. of 48's 57c

**LIFEBUOY SOAP**  
REG. 3 for 22c BATH 4 for 43c

**PILLSBURY FLOUR** "The Grand National Flour" 2-LB. 5-LB. 10-LB. 23c 49c 93c

**OPEN FOR A LIMITED TIME FOR LUMP SUM INVESTMENTS** (Income Shares)

We are Currently Paying 2 1/2% Interest

**NORTH BELLEVILLE SAVINGS & LOAN ASSOCIATION**  
566 WASHINGTON AVE. BELLEVILLE 9, N. J.  
Savings Insured Up to \$10,000 - Federal Savings & Loan Insurance Corp.

**VITA BRAND**

**'PARTY SNACKS'**

wonderful-ready to serve

**HERRING FILLETS IN WINE SAUCE**

NEW RECIPE BOOK FREE!

write VITA FOOD PRODUCTS, INC., 644 Greenwich Street, New York 24

**PROCLAMATION**

The Community Chest of Belleville, a most worthy organization for our six Red Feather services, namely, Family Service, Boy Scouts, United Defense Fund, Essex County Service for Chronically Ill, Visiting Nurses' Association and Sister Kenny Fund, is now making its annual appeal for funds.

As citizens of Belleville it is our duty to contribute to the Community Chest as generously as our means will permit:

Because:

It supports local agencies, which are a necessary part of our every day life.

Because:

Its "once a year appeal" enables us to contribute to six agencies that serve all the people.

October 1 to October 31 are Community Chest days. A three days blitz, October 10, 11 and 12, will be conducted by the residential committee of the Community Chest.

I urge all Belleville citizens to open their doors to these volunteer workers and give generously to this most worthy cause.

*James J. Tully*  
Mayor.

Dated: October 9, 1952

**BURRY'S FOUR FLAVOR Sandwich Creams** 12-oz. 39c

**BURRY'S PECAN PLANTATION Cookies** 10-oz. 39c

**WAX** 55c 32-oz. 97c

**WOODBURY Soap** 3/22c 32-oz. 4/43c

**PURE SILK** 30 x 40

**Gaucho Scarf** HOLLYWOOD DESIGNED FOR GENE TIENEY \$2.50 Value Only 50c

and any 2-lb. soap worth GET ORDER BLANKS HERE

**LUX TOILET SOAP** 4 for 43c

**CHEER NEW BLUE SOAP POWDER** LARGE 29c GIANT 69c

**FREE OF EXTRA COST**

19¢ VALUE O-CEL-O SPONGE

When you buy Household size at reg. price 23c

**CHOICE MEATS**

Genuine Spring **LEGS o' LAMB** 67c lb.

U.S. Gov't Graded Prime & Choice

Genuine Spring Loin **LAMB CHOPS** 98c lb.

U.S. Gov't Graded Choice and Prime

Armour's Sugar Cured **SLICED BACON** (BANNER) 55c lb.

Lean Delicious **SLICED BOILED HAM** 69c lb.

**NEW JOY** 69c

**LIPTON TEA** THE BRISK TEA 68c

**LIPTON TEA BAGS** THE BRISK TEA pkgs. of 48's 57c

**LIFEBUOY SOAP**  
REG. 3 for 22c BATH 4 for 43c

**PILLSBURY FLOUR** "The Grand National Flour" 2-LB. 5-LB. 10-LB. 23c 49c 93c



Times Classified Advertisements

To Sell, Buy or Trade Telephone Belleville 2-3200

**Asphalt Driveways**  
GARRETT BROTHERS—Asphalt driveways and masonry, 90 East Centre Street, telephone Nutley 2-1210.

**Aluminum Windows**  
"THERMOGLIDE"—heavy gauge extruded aluminum construction windows and doors—the finest ever—compare and be convinced of its superiority. Telephone evenings or Saturdays, Fred Klein, Nutley 2-2078.

**Beauty Shop**  
ROSE BEAUTY SHOP—Specializing in Helen Curtis color wave, also Gary Richards Rocket wave for dry hair. 54 Holmes St., near Heckel St. Tel. 2-2083.

**Carpenters & Builders**  
COMPLETE HOME MAINTENANCE—also alterations and remodeling. Call for estimate. For hire, Louis Scatario, 143 Passaic Avenue, Telephone Belleville 2-2157.

**Child Care**  
NUTLEY PARK NURSERY SCHOOL; hours 8 A.M.—5:30 P.M. Transportation provided. Registered nurse. Trained teacher. Telephone Nutley 2-4099.

**Child Care**  
CHILD CARE by hour, day or week. Licensed home. Reasonable rates. Telephone BE 2-4241 J.

**Decorators - Painters**  
CARL BALZER, Jr., Paperhanger and Painting. Free estimates. 189 Holmes Street, telephone Belleville 2-5018.

**Interior Painting and Paperhanging**  
Reasonable prices. Free estimates. Telephone George H. Breen at BE 2-2928-M.

**Dressmaking**  
EXPERIENCED DRESSMAKER—would like dressmaking and alterations work at home. 88 Ralph Street or telephone BE 2-6293.

**Electricians**  
ELECTRIC APPLIANCE HOSPITAL—first class electric work. washing machines; electric, steam, water irons; lamps; toasters. Free estimates. 1516 E. 11th St. Phone 2-2611.

**For Rent**  
FOUR ROOM APARTMENT—FURNISHED. Tel. included. Also unfurnished. Call for details. Phone BE 2-2711 after 6 P.M.

ONE OR TWO ROOM FURNISHED apartment; private bath. Private entrance. Telephone BE 2-5760.

BUSINESS WOMAN would like to share her five room apartment with one or two reliable business men. Telephone BE 2-6794 after 6 P.M.

TWO BEAUTIFUL ROOMS—unfurnished; bedroom, kitchenette, bath. Telephone LE 2-1586.

APARTMENT—five rooms, second floor of two family house; new, large, light and hot. Call for details. Write Box 126 Belleville Times-News.

THREE ROOM unfurnished Apt. Available only. Call BE 2-3632 W.

**For Sale**  
DINING ROOM TABLE and china, glass, \$30.00; Westinghouse refrigerator, \$75.00; living room couch, \$60.00; bedroom, \$40.00; living room chair, \$8.00. Telephone BE 2-1151 W after 6 P.M.

PIANO, baby grand, antique ivory, finished. Telephone BE 2-2828 any morning.

YOUTH BED, large size, blonde wood, steel springs, good condition. Call for details. Phone 2-4455.

1948 CHEVROLET two door sedan, radio and heater, very good rubber. Telephone BE 2-5529 R.

COAT, Hudson silk, size 16, 7 1/2 length, condition, \$20.00; small carpeted jacket, brown, \$5.00; pair heavy portions, wine color, custom made, \$6.00. Telephone BE 2-2828 any morning.

YOUTH BED, large size, blonde wood, steel springs, good condition. Call for details. Phone 2-4455.

1948 CHEVROLET two door sedan, radio and heater, very good rubber. Telephone BE 2-5529 R.

COAT, Hudson silk, size 16, 7 1/2 length, condition, \$20.00; small carpeted jacket, brown, \$5.00; pair heavy portions, wine color, custom made, \$6.00. Telephone BE 2-2828 any morning.

YOUTH BED, large size, blonde wood, steel springs, good condition. Call for details. Phone 2-4455.

1948 CHEVROLET two door sedan, radio and heater, very good rubber. Telephone BE 2-5529 R.

COAT, Hudson silk, size 16, 7 1/2 length, condition, \$20.00; small carpeted jacket, brown, \$5.00; pair heavy portions, wine color, custom made, \$6.00. Telephone BE 2-2828 any morning.

Help Wanted - Male Help Wanted - Male Real Estate for Sale

**MACHINE OPERATORS**  
MOLDERS  
MATERIAL HANDLERS

Good Pay—Steady Work—Permanent Shifts  
Apply 9 to 11 A.M.—1 to 2 P.M. Daily.

**WESTINGHOUSE ELECTRIC CORPORATION**  
720 Washington Avenue  
Belleville, N. J.

**Help Wanted Female**  
OPERATORS WANTED on lathe, steady work. Partly experienced accepted. We will teach you. General Dress Co., 604 Passaic Ave., Nutley. Telephone Nutley 2-9826.

**Help Wanted - Male**  
LAUNDRY WASHROOM WORK, hours 7:30 to 12 midnight. Starting rate \$1.46 per hour. Experience necessary. Apply 9 to 5 p.m. The Great A & P Tea Co., 265 Cortland St., Belleville.

**Help Wanted - Male**  
BOY, 18 YEARS or older, for tumbler work in laundry. No experience necessary. Apply 9 to 5 p.m. The Great A & P Tea Co., 265 Cortland St., Belleville.

**Help Wanted - Male**  
A DARGAN on Singer machines, with new consoles, \$45.00; Singer portables, \$29.00; all modern features. 1-1952 electric treadle bobbin machines, \$17.95; also 1952 Zig-Zag machines, the miracle machine that does everything. 1252 1/2 Broadway, Belleville.

**Help Wanted - Male**  
PHONE OR WRITE CARL A. ORECHIO, 43 Washington Ave., Nutley. Nutley 2-4470 for travel and theater reservation.

**Help Wanted - Male**  
STATEMENT OF OWNERSHIP  
NOTICE is hereby given that the accounts of the subscribers, Administrators of the Belleville Times-News, for the year ended December 31, 1951, are now open for examination and audit. The same will be closed on January 1, 1952.

**Help Wanted - Male**  
L. BAMBARGER and COMPANY  
"One of America's Great Stores"  
GENERAL OFFICE WORKER—Five day week. Apply Self Your Self Company, 165 Franklin Ave., Nutley.

**Help Wanted - Male**  
STENOGRAPHER TYPIST  
School office. Hours, 8:30 to 4:30 P.M. Typing, shorthand, stenography, clerical work, some stenography. Telephone Nutley 2-9191 for interview.

**Help Wanted - Male**  
GIRLS OR WOMEN, part time, to help in luncheonette. Pleasant surroundings. Good opportunity. 194 Washington Avenue. Call in person for interview.

**Help Wanted - Male**  
WOMAN, with baking experience, also waitress with dinner serving experience. Rutgers Restaurant, 194 Washington Avenue. Call in person for interview.

**Help Wanted - Male**  
GIRL to operate tap milk machine, 8 A.M. to 5 P.M. Apply American Typewriter Company, 151 Cortland Street, Belleville.

**Help Wanted - Male**  
WOMAN WANTED for general housework, one day a week. Write to Box No. 126 Belleville Times-News.

**Help Wanted - Male**  
CLERICAL—PART TIME  
Typing essential. Convenient to Belleville. Apply in person between 10 A.M. and 4:30 P.M. at the RCA SERVICE COMPANY, 189 Oran Street, Newark, N. J.

**Help Wanted - Male**  
THE NUTLEY SUN requires some people preferably experienced in office work for circulation and advertising. Write to Box No. 126 Belleville Times-News.

Help Wanted - Male Help Wanted - Male Real Estate for Sale

**MACHINE OPERATORS**  
MOLDERS  
MATERIAL HANDLERS

Good Pay—Steady Work—Permanent Shifts  
Apply 9 to 11 A.M.—1 to 2 P.M. Daily.

**WESTINGHOUSE ELECTRIC CORPORATION**  
720 Washington Avenue  
Belleville, N. J.

**Help Wanted Female**  
OPERATORS WANTED on lathe, steady work. Partly experienced accepted. We will teach you. General Dress Co., 604 Passaic Ave., Nutley. Telephone Nutley 2-9826.

**Help Wanted - Male**  
LAUNDRY WASHROOM WORK, hours 7:30 to 12 midnight. Starting rate \$1.46 per hour. Experience necessary. Apply 9 to 5 p.m. The Great A & P Tea Co., 265 Cortland St., Belleville.

**Help Wanted - Male**  
BOY, 18 YEARS or older, for tumbler work in laundry. No experience necessary. Apply 9 to 5 p.m. The Great A & P Tea Co., 265 Cortland St., Belleville.

**Help Wanted - Male**  
A DARGAN on Singer machines, with new consoles, \$45.00; Singer portables, \$29.00; all modern features. 1-1952 electric treadle bobbin machines, \$17.95; also 1952 Zig-Zag machines, the miracle machine that does everything. 1252 1/2 Broadway, Belleville.

**Help Wanted - Male**  
PHONE OR WRITE CARL A. ORECHIO, 43 Washington Ave., Nutley. Nutley 2-4470 for travel and theater reservation.

**Help Wanted - Male**  
STATEMENT OF OWNERSHIP  
NOTICE is hereby given that the accounts of the subscribers, Administrators of the Belleville Times-News, for the year ended December 31, 1951, are now open for examination and audit. The same will be closed on January 1, 1952.

**Help Wanted - Male**  
L. BAMBARGER and COMPANY  
"One of America's Great Stores"  
GENERAL OFFICE WORKER—Five day week. Apply Self Your Self Company, 165 Franklin Ave., Nutley.

**Help Wanted - Male**  
STENOGRAPHER TYPIST  
School office. Hours, 8:30 to 4:30 P.M. Typing, shorthand, stenography, clerical work, some stenography. Telephone Nutley 2-9191 for interview.

**Help Wanted - Male**  
GIRLS OR WOMEN, part time, to help in luncheonette. Pleasant surroundings. Good opportunity. 194 Washington Avenue. Call in person for interview.

**Help Wanted - Male**  
WOMAN, with baking experience, also waitress with dinner serving experience. Rutgers Restaurant, 194 Washington Avenue. Call in person for interview.

**Help Wanted - Male**  
GIRL to operate tap milk machine, 8 A.M. to 5 P.M. Apply American Typewriter Company, 151 Cortland Street, Belleville.

**Help Wanted - Male**  
WOMAN WANTED for general housework, one day a week. Write to Box No. 126 Belleville Times-News.

**Help Wanted - Male**  
CLERICAL—PART TIME  
Typing essential. Convenient to Belleville. Apply in person between 10 A.M. and 4:30 P.M. at the RCA SERVICE COMPANY, 189 Oran Street, Newark, N. J.

**Help Wanted - Male**  
THE NUTLEY SUN requires some people preferably experienced in office work for circulation and advertising. Write to Box No. 126 Belleville Times-News.

Help Wanted - Male Help Wanted - Male Real Estate for Sale

**MACHINE OPERATORS**  
MOLDERS  
MATERIAL HANDLERS

Good Pay—Steady Work—Permanent Shifts  
Apply 9 to 11 A.M.—1 to 2 P.M. Daily.

**WESTINGHOUSE ELECTRIC CORPORATION**  
720 Washington Avenue  
Belleville, N. J.

**Help Wanted Female**  
OPERATORS WANTED on lathe, steady work. Partly experienced accepted. We will teach you. General Dress Co., 604 Passaic Ave., Nutley. Telephone Nutley 2-9826.

**Help Wanted - Male**  
LAUNDRY WASHROOM WORK, hours 7:30 to 12 midnight. Starting rate \$1.46 per hour. Experience necessary. Apply 9 to 5 p.m. The Great A & P Tea Co., 265 Cortland St., Belleville.

**Help Wanted - Male**  
BOY, 18 YEARS or older, for tumbler work in laundry. No experience necessary. Apply 9 to 5 p.m. The Great A & P Tea Co., 265 Cortland St., Belleville.

**Help Wanted - Male**  
A DARGAN on Singer machines, with new consoles, \$45.00; Singer portables, \$29.00; all modern features. 1-1952 electric treadle bobbin machines, \$17.95; also 1952 Zig-Zag machines, the miracle machine that does everything. 1252 1/2 Broadway, Belleville.

**Help Wanted - Male**  
PHONE OR WRITE CARL A. ORECHIO, 43 Washington Ave., Nutley. Nutley 2-4470 for travel and theater reservation.

**Help Wanted - Male**  
STATEMENT OF OWNERSHIP  
NOTICE is hereby given that the accounts of the subscribers, Administrators of the Belleville Times-News, for the year ended December 31, 1951, are now open for examination and audit. The same will be closed on January 1, 1952.

**Help Wanted - Male**  
L. BAMBARGER and COMPANY  
"One of America's Great Stores"  
GENERAL OFFICE WORKER—Five day week. Apply Self Your Self Company, 165 Franklin Ave., Nutley.

**Help Wanted - Male**  
STENOGRAPHER TYPIST  
School office. Hours, 8:30 to 4:30 P.M. Typing, shorthand, stenography, clerical work, some stenography. Telephone Nutley 2-9191 for interview.

**Help Wanted - Male**  
GIRLS OR WOMEN, part time, to help in luncheonette. Pleasant surroundings. Good opportunity. 194 Washington Avenue. Call in person for interview.

**Help Wanted - Male**  
WOMAN, with baking experience, also waitress with dinner serving experience. Rutgers Restaurant, 194 Washington Avenue. Call in person for interview.

**Help Wanted - Male**  
GIRL to operate tap milk machine, 8 A.M. to 5 P.M. Apply American Typewriter Company, 151 Cortland Street, Belleville.

**Help Wanted - Male**  
WOMAN WANTED for general housework, one day a week. Write to Box No. 126 Belleville Times-News.

**Help Wanted - Male**  
CLERICAL—PART TIME  
Typing essential. Convenient to Belleville. Apply in person between 10 A.M. and 4:30 P.M. at the RCA SERVICE COMPANY, 189 Oran Street, Newark, N. J.

**Help Wanted - Male**  
THE NUTLEY SUN requires some people preferably experienced in office work for circulation and advertising. Write to Box No. 126 Belleville Times-News.



### Rosary Society Receives Sixty-Five New Members

The Rosary Society of the Holy Family Church held its 6th annual Communion breakfast on Sunday, October 5th. All members received Communion at the 8:15 Mass, and then attended a Communion breakfast in the school auditorium. Sixty-five members were formal-

ly received into the society in church at an evening candlelight ceremony, preceding Benediction and a sermon by Rev. Francis J. Blake.

Following the church ceremony, a social was held in the school auditorium for members and their husbands. Refreshments were served, and entertainment was provided.

Among the honored guests attending the ceremony and social were Sister Frances Mastaglio, M.F.F., Sisters, and faculty members of the school, Rev. Francis J. Blake, John Spottoni, Mayor Harry W. Chenoweth and Mrs. Richard Blake. All church organizations were represented.

### Rosary Society Sponsors Sale During Rosary Month

The Rosary Society of Holy Family Church is sponsoring a sale of rosaries after each mass during the month of October, which is known as Rosary Month. This sale is being held in the church base-

ment. Mrs. Lenore Maurillo is in charge of the committee handling the program. She will be assisted by a group of Rosary members, who will be on hand after each Mass to assist anyone wishing to purchase a pair of rosaries.

On Saturday, October 25th at 8 p.m., a Monte Carlo night will be held in the school auditorium. Proceeds of the event will go towards a new classroom for the school.

Mrs. Peter Musco and Mrs. Raymond Addeo are co-chairmen of the affair. There will be games, square dances, door prizes, tomato pies, hot dogs, and soda.

### Linoleum sink tops stay waterproof for years!

No waxing over—yes with Plastic Wipe-On. ON your linoleum countertop sink with a rain transparent plastic unaffected by soaps, hot water, lemon juice or other kitchen acids. Protects against water seepage, staining, invasion by ant-kick and cockroaches—just wipe on Plastic Wipe-On with a cloth. Two coats—or 3 for even greater protection. Only 20¢ and 4¢ at hardware and dept. stores. Ideal for Book Furniture, wood, work, too.

**plastic WIPE-ON**



### COME IN!

Next time you plan to take a trip come in and browse through our current literature on interesting travel. There'll be a helpful travel expert at your elbow to answer any and all questions. Never any charge for our service. Open Fridays 9 P. M., Saturdays to 2.

**CARLA A. ORECHIO**  
COMPLETE TRAVEL RESERVATION SERVICE  
43 WASHINGTON AVE., NUTLEY 2-4300  
REAL ESTATE - INSURANCE

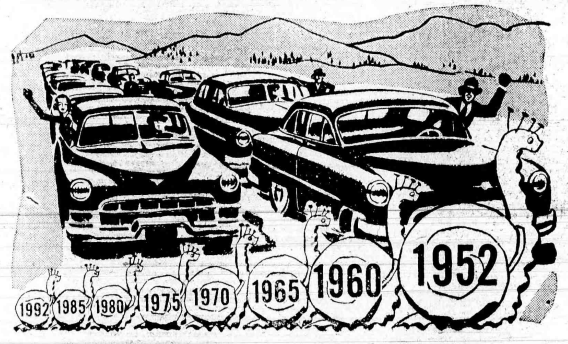
### HANNAN'S Little PLUMBER

NEW UNITS MAKE THE HOME A JOY—THOSE ANGRY ANGELS WHO BECOME ANNOY FOR BEAUTY AND MORE CONVENIENCE

**HANNAN, Jr.**  
PLUMBING & HEATING  
23759 & 23857  
48 WILSON PLACE

**PARKWAY BEVERAGES, INC.**  
562 WASHINGTON AVENUE BELLEVILLE, N. J.  
Now Delivering Direct to The Home  
All Popular Brands of Beer, Ale and Sodas  
Avoid the Annoyance of Having to Return Empty Bottles  
We deliver and Pick Up Empties at The Same Time  
WEEKLY DELIVERY SERVICE PHONE: Belleville 2-3329  
and your wants will promptly be attended to  
"DRAFT BEER FOR ALL OCCASIONS" Coolers Supplied  
**UNDER MANAGEMENT FREDDIE HANDLON**  
SPECIAL CASH and CARRY  
Small Assorted Soda, 1.00 plus deposit Large, 1.50

## WHY SUFFER A 40 YEAR ROADBLOCK?



## get the Garden State Parkway NOW...Vote Yes!

A 1992 Parkway can't cure a 1952 traffic jam headache. The 180-mile Garden State Parkway can be built in three years—instead of 40!

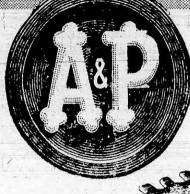
The State Highway Department has built about four miles of Parkway each year since 1947. It can't be done any faster with present highway funds. At this rate it would take more than 40 years to build the Parkway.

**VOTE YES!**  
FOR TOP SAVINGS  
At the Top of Your Ballot November 4  
**GARDEN STATE PARKWAY**  
(This advertisement paid for by the N. J. Highway Authority)

A YES vote on the Parkway referendum can save you 37 years of bumper-to-bumper irritation. What's more, the estimated \$8,000,000 of state funds spent yearly on the Parkway since 1947 can be released for other essential highway construction in all 21 counties of New Jersey.

Crowd 40 years of Parkway building into three; Save an estimated \$80-000,000 in finance charges. Vote YES on the Parkway referendum November 4th!

# A&P's 93rd Anniversary—Second Big Week!



**TOP GRADE "SUPER-RIGHT" QUALITY**  
**Pork Loins**  
Rib end 1b. 45¢ | Loins end 1b. 55¢ | Rib half—full cut 1b. 55¢ | Loins half—full cut 1b. 63¢  
Center Cut Roasts or Chops 1b. 79¢

**FRESH, TENDER, TOP-GRADE**  
**Broiling & Frying Chickens**  
Ready-to-Cook 1b. 55¢ | Regular Style 1b. 41¢  
In Self-Service Meat Depts. Sizes under 1 lb.

**Honeydews**  
Large, Sweet, Juicy each 39¢

**Fresh Beets** Nearby farms bunch 5¢  
**Fresh Carrots** Western bunch 10¢  
**Pascal Celery** Nearby farms stall 12¢  
**Tokay Grapes** Western 2 lbs. 19¢  
**Potatoes** U.S. No. 1 grade Long Island 10 lbs. 59¢  
**Iceberg Lettuce** Western large head 19¢  
**Sweet Potatoes** Nearby farms 3 lb. 25¢  
**Yellow Turnips** U.S. No. 1 grade 1 lb. 4¢

**Pound Cake**  
Big 23 oz. cut (Regularly 59¢) each 49¢

**Marble White Bread** Sliced 1 lb. loaf 15¢  
**Danish Coffee Ring** Plain each 31¢  
**Muffins** Corn or Bran pkg. of 6 21¢

**White House Evaporated Milk** 6 tall cans 79¢

**Fancy Domestic Cheese Sliced Swiss** 1b. 69¢

**Butter** Sunnyfield—Fresh Fancy Creamery 3 lb. brick 79¢

**Sliced Provolses** Domestic 1b. 59¢  
**Kraft Velveta** Cheese food 1/2 lb. pkg. 33¢  
**Ched-O-Bit** Cheese food 1/2 lb. pkg. 29¢  
**Cream Cheese** Philadelphia or Borden's 8 oz. pkg. 44¢

**Frozen Foods**  
**Orange Juice** Dole 6 oz. can 27¢  
**Strawberries** Libby's Sliced 10 1/2 oz. can 25¢  
**Green Beans** French style—Libby's 10 oz. pkg. 23¢

**Heinz Famous Quality Soups**  
**Clam Chowder** 2 cans 31¢  
**Vegetable with Beef** 2 cans 31¢  
**Chicken Rice** 2 cans 31¢

**Other Heinz Values**  
**Baked Beans** 3 varieties 2 1lb. 27¢  
**Tomato Ketchup** 14 oz. bottle 23¢  
**Cooked Spaghetti** 3 6 oz. 25¢

**Pork Chops** Hip and shoulder cuts 1b. 45¢  
**Chuck Roast or Steak** Blade bone in 1b. 69¢  
**Smoked Pork Shoulders** 1b. 45¢  
**Smoked Beef Tongues** Short cut 1b. 65¢  
**Sliced Bacon** "Super-Right" 1b. 64¢  
**Beef Liver** Specially selected 1b. 79¢

**Applesauce** A&P brand 2 16 oz. 27¢  
**Cranberry Sauce** Jell-O brand 16 oz. can 19¢  
**Apricots** Juice brand 29 oz. can 31¢  
**Blueberries** U.S. No. 1 15 1/2 oz. can 27¢  
**Purple Plums** A&P brand 30 oz. can 23¢  
**Fruit Cocktail** Boy's Del Monte 30 oz. can 37¢  
**Thank You Pears** 16 oz. can 19¢  
**Apple Juice** Mott's Red Cheek 2 quart bottles 43¢

**Bartlett Pears** Iona Brand 29 oz. can 27¢

**Pineapple Juice** A&P brand 2 18 oz. 23¢  
**Grapefruit Juice** A&P or various brands 2 18 oz. 17¢  
**Heart's Delight** Apricot, Peach or Pear Nectar 2 12 oz. 21¢  
**Dried Prunes** A&P brand 1 lb. 23¢  
**Seedless Raisins** A&P brand 15 oz. pkg. 17¢  
**Premium Saltines** Nabisco 2 7 1/2 oz. 35¢  
**Krispy Crackers** Sunshine Blue Pak 2 7 1/2 oz. 35¢  
**Chocolate Wafers** Famous Nabisco 8 oz. cello tray 29¢

**Peaches** Iona Brand 2 29 oz. 49¢

**Crispo Oatmeal Cookies** 10 oz. pkg. 19¢  
**Bisquick** For quick baking 40 oz. pkg. 45¢  
**Golden Blossom Honey** 16 oz. jar 33¢  
**Log Cabin Syrup** 12 oz. jar 27¢  
**Bosco** Milk amplifier 12 oz. jar 29¢  
**Bromedary Mixes** Cider-bread and comb. 4 7 1/2 oz. 47¢  
**Angel Food Mix** Pillsbury 14 oz. pkg. 59¢  
**Chocolate Pudding** Myltime 2 2 1/2 oz. 9¢

**Richardson & Robbins Baked Chicken** 6 oz. can 74¢ | 12 oz. can 1.43

**Peter Pan Mounds, Almond Joy** 3 pks. 23¢

**Lipton Soup Mixes** Tomato veg. or chicken noodle 3 pks. 33¢

**Breeze** All purpose detergent large pkg. 30¢ | giant pkg. 59¢

**Oxydol** For lingerie and dishes large pkg. 27¢ | giant pkg. 66¢

**Good Luck—Yellow Margarine** Save 10¢ on your favorite coffee use coupon on back of package 1 lb. 31¢

**Bon Ami Cleanser** Hasn't scratched yet 2 12 oz. 25¢

**Frankfurters** Skinless 1b. 59¢  
**Pork Sausage** Link 1b. 63¢ | Meat 1b. 49¢  
**Fine Quality Seafood** Available in Fresh Fish Departments.  
**Swordfish Steaks** Fancy 1b. 59¢  
**Fillet of Flounder** Fancy 1b. 53¢

**Tomato Soup** Ann Page 3 cans 29¢  
**Minestrone Soup** Progresso 2 20 oz. 43¢  
**Sweet Peas** Reliable brand 2 16 oz. 29¢  
**String Beans** Lord Mott French style 2 15 1/2 oz. 31¢  
**Lima Beans** A&P brand 16 oz. can 21¢  
**Red Kidney Beans** Progresso brand 2 20 oz. 27¢  
**Golden Corn** Kountry Kist cream style 2 17 oz. 29¢  
**Prepared Spaghetti** Ann Page 2 13 1/2 oz. 25¢

**Prune Juice** Coronet 2 quart 43¢

**Mueller's Macaroni** Spaghetti 2 16 oz. 35¢  
**Macaroni or Spaghetti** Ann Page 2 16 oz. 33¢  
**Van Camp's Tenderon** 2 6 oz. 23¢  
**Black Currant Jam** Chivers' 16 oz. jar 35¢  
**Campbell's Beans** 2 2 1/2 oz. 25¢  
**Gorton's Codfish Cakes** Ready-to-serve 10 oz. box 22¢  
**Gravy Master** for making gravies 1 1/2 oz. box 15¢  
**Liverwurst Spread** Stahl-Meyer 4 1/2 oz. tin 17¢

**Cookies** Nabisco Chocolate Chip 7 1/2 oz. 21¢

**Diamond Crystal Salt** Plain, iodized 2 26 oz. 21¢  
**Marshmallow Fluff** 7 1/2 oz. jar 21¢  
**Sundaeettes** Chocolate—Butterscotch 6 oz. jar 14¢  
**Aerowax** No rubbing wax lamb's wool applicator 1/2 gallon can 89¢  
**Tidy Sandwich Bags** 2 2 1/2 oz. 19¢  
**Modess** 2 pkts 77¢  
**Kleenex** 2 2 1/2 oz. 29¢  
**Facial Tissue** White or colored 2 2 1/2 oz. 43¢

**Peter Pan Peanut Butter** 12 oz. jar 37¢

**Karo Syrup** Blue label 23¢

**Marcal Paper Napkins** Tea size 2 pkts 21¢

**Bab-O 1/2 Price Offer** Buy 2 cans regular price 23¢ | Get 1 can half price 6¢ | You get 3 cans for 20¢

**Ivory Snow** For fine fabrics and dishes large pkg. 27¢

**Bon Ami Cleanser** Hasn't scratched yet 2 12 oz. 25¢

**A&P Super Markets**  
THE GREAT ATLANTIC AND PACIFIC TEA COMPANY  
All A&P Super Markets and Self-Service stores are Open Friday Evenings to 9 P. M.  
Prices effective through Saturday, October 11th in A&P Super Markets and Self-Service Stores.



# Be Neighbor... Give to YOUR Community Chest

THURSDAY, OCTOBER 9, 1952

THE BELLEVILLE TIMES-NEWS

SECOND SECTION PAGE ONE

## Twenty-Five Zone Captains Report Teams Organized

Enthusiasm Of Workers For Three Day Drive, October 10-12 Is Very High

Twenty-five Zone Captains in the Residential Division of the Belleville Community Chest report the completion of their campaign teams for the three day house-to-house drive here on October 10, 11 and 12. The campaign organization is nearly complete and the enthusiasm of the workers indicates that Belleville will have a successful campaign and raise its \$34,050 goal.

The workers follow:

Section No. 4 — Mrs. Harry Fredericks, Captain  
Mrs. Margaret Mc Gregor  
Jean Dunlop  
Jean Petzel  
Virginia Cook  
Angel Mc Hird  
Peggy Watson  
Barbara Fredericks  
Marie Pravia  
Section No. 5 — Mrs. Allan G. Love, Captain  
Mrs. Mary Sage  
Mrs. Walter J. Skinner  
Mrs. John E. Warren  
Mrs. Peter J. North  
Mrs. William Plapp  
Mrs. Daniel Dunn  
Mrs. Harold Alperin  
Mrs. Wm. Duncan  
Mrs. Saul Marder  
June Encke  
Arlene Joffman  
Mrs. Alice McCullough  
Robert W. Jones  
Rudy Forte  
Annaelisa Hettling  
Marion Sparks  
Mrs. Dorothy Johnson  
Alice Encke  
Maude Miller  
Mrs. S. Nowelsky  
Sandra Smith  
Mrs. Ralph Conn  
Mrs. Edward Laux  
Mrs. George Siclar  
Mrs. Marjorie Haney  
Mrs. Ralph M. Carroll  
Jack Connolly  
Mrs. Hazel M. Jennings  
Mrs. Laura Harvey  
Mrs. Claude Freid  
Mrs. J. J. Phillips  
Mrs. J. Denster  
Elaine Viespoli  
Section No. 6A — Steve Martin, Captain  
Estelle Donner  
Joan Mohler  
Mrs. Lillian Lempert  
Mrs. Kenneth Foley  
Mrs. J. Cantenaci  
Mrs. C. Carter  
Mrs. H. Kane  
Mrs. Steve Martin  
Mrs. Jules Cordes  
Mrs. W. Amato  
Mrs. M. Edwards  
Mrs. J. Lord  
Mrs. W. Mass  
Arch Ross  
Mrs. Harry Burke  
Section No. 6B — Mrs. W. Schumacher  
Mrs. Julius Augarten  
Section No. 6B — Mrs. Helen Reynolds, Captain  
Mrs. Marion Apple  
G. Anderson  
Mrs. Rudy  
Mrs. Hazel Elliott  
Mrs. John Rehr  
Mrs. H. Van Winkle  
Mrs. J. Gilchrist  
Mrs. Jeanne Gibbons  
Mrs. Jeanne Bigan  
Mrs. Shirley Cunningham  
Kathleen Dick  
Joan Vonderheydt  
Mrs. Seena Salandra  
Lois Bloemker  
Grace Abbot  
Elsie Schneider  
Section No. 7 and No. 8 — Mrs. Fred L. Bartlett, Captain  
Peter Torre  
Mrs. H. N. Tiffany  
Howard Smith  
Mrs. C. L. Stuphen  
Mrs. Helen Barrs  
Mrs. Blanche Sessler  
Mrs. J. Kiernan  
Donald Volk  
Mrs. Margaret Gaccione  
Mrs. Mary Rollieri  
Mrs. Wm. Cullen  
Mrs. Philip Riso  
Mrs. M. De Stefano  
Mrs. Mary Sage  
Mrs. A. Volk  
Mrs. F. J. Tirzo  
Mrs. W. Oswald  
Section No. 9 — Frank De Marco, Captain  
Madeline Seebauer  
Martha Maccaskey  
Margaret Waadkye  
Fatty Lay  
Ruth Aiken  
Connie Calenda  
Genevieve D'Angelo  
Section No. 10 — E. Steffensen, Captain  
Mrs. L. Dahlquist  
Mrs. D. Coheurn  
Mrs. N. Colaninno  
Mrs. S. Zirn  
Mrs. T. Landes  
Mrs. R. Conklin  
Mrs. A. Poole  
Mrs. G. Reuter  
Mrs. E. Gientzlin  
Mrs. B. Metcalf  
Mrs. J. Wittek  
Mrs. T. Patterson  
Mrs. R. Sprow  
Mrs. P. Bodholt  
Mrs. G. Smith  
Mrs. J. Denster  
Mrs. W. Dorman  
Mrs. H. Schutz  
Section No. 11 — John Distasio, Captain  
Mrs. Mary Kelly  
Mrs. P. Richian  
Mrs. E. Stivers  
Mrs. Lillian Delaney  
Hilda Vallance  
Mrs. B. Spennin  
Mrs. Richard Steane  
Mrs. Maryann Ferrigno  
Mrs. Doris Distasio  
Alvina Lindauer  
John Distasio, Jr.  
Elinor D'Angelo  
Mrs. Mary Kelly  
Carol Distasio  
Section No. 12 — Mrs. Isadore Goldenberg, Captain  
Mrs. Robert Mayers  
Mrs. S. McPherson  
Mrs. R. P. Zoller  
Mrs. Harry Turken  
Mrs. Leonard Cowan  
Isabel Rochau  
Mrs. Nuncio Pico  
Mrs. L. Wasserman  
Mrs. Sidney Lane  
Mrs. Carl Carducci  
Mrs. Whitman  
Leo Hood  
Mrs. Elizabeth Grover  
Mrs. Henry J. Paganelli  
Mrs. Frank De Marco  
Mrs. Thomas Dowd  
Mrs. Laverne Mazy  
Mrs. Anthony Grinnelli  
Mrs. Edward Short  
Mrs. Frank Good  
Section No. 13 A — Mrs. Henry Hansen, Captain  
Mrs. George Bauer  
Mrs. Charles George  
Mrs. Henry Allen  
Mrs. Lloyd Nunn  
Mrs. William Konrod  
Mrs. Robert Lunn  
Mrs. H. Hansen  
Miss L. Goettert  
Section No. 13 B — Mrs. Max Schwarz, Captain  
Mrs. Floyd Thomas  
Mrs. Adolph Bick  
Mrs. Richard Hartnell  
Mrs. Benjamin Becker  
Mrs. George Beeson  
Mrs. Harry Moore  
Mrs. Paul Rodgers  
Mrs. Irving Taylor  
Mrs. W. Alber  
Mrs. Edwin Carben  
Mrs. Malouin Shav  
Mrs. Richard Bennett  
Mrs. Frederick Gray  
Mrs. Edward Lewis  
Mrs. George Manley  
Mrs. Seymour Kirch  
Mrs. Samuel Franson  
Mrs. E. P. Delhagen  
George Beeson  
Harry Moore  
Mrs. J. Landrum  
Seymour Cuker  
Mrs. Harold Zimar  
Mrs. Benjamin Moody  
Mrs. Irwin Chart  
Mrs. Frederick Schroeder  
Mrs. Thomas Murray  
Mrs. Andrew Goddard  
Mrs. Martin Snider  
Mrs. Frank Caskey  
Mrs. A. J. Mastroni  
Mrs. W. Bergida  
Miss Clarizio  
Mrs. Wittmann  
Mrs. Henry Reiman  
Mrs. S. Walters  
Mrs. Vance Hanley  
Mrs. R. Mayers  
Section No. 14 — Mrs. Patrick L. Petoia, Captain  
Charles Natale  
Lillian Mellano  
Mrs. Grace Monahan  
Mary Tassello  
Section No. 15 — Mrs. Evan H. Thomas, Captain  
Mrs. Henry L. Sturge  
Mrs. James P. Condon, Jr.  
Ralph Transue  
Mrs. Robert P. France  
Virginia Lembrecht  
Mrs. Vilma Vitale  
H. Naylor  
Barbara Gaudioso  
Irving Folk  
Mrs. Lida Baker  
Mrs. E. J. Lambrecht  
Ethel Akersten  
Mrs. June Jucullo  
Robert Pest  
Section No. 16 — No Captain  
Harold Hollar  
Mrs. J. Ryan  
Eugene Kelly  
Mrs. J. Donnelly  
Godfred Johnson  
Martin Malague  
Section No. 17 — Michael Dacey, Captain  
Mrs. James A. Leonard  
Mrs. Thomas Dowd  
Francis Macey  
Mrs. William Friel  
Mrs. John Tully  
William Friel  
Mrs. Rudy Garby  
Mrs. Walter Loewen  
Mrs. Joseph Trommel  
George Mahler  
Lawrence McGuirk  
Edward Meyer  
Ann Donovan  
Greta Kinnely  
Section No. 18 — No Captain  
Harold Hollar  
Mrs. J. Ryan  
Eugene Kelly  
Mrs. J. Donnelly  
Godfred Johnson  
Martin Malague  
Section No. 19 — Herman Knuppel, Captain  
Mrs. Herbert L. Niles, Co-Cap.  
Mrs. Marion Peck  
Mrs. R. C. Whitfield  
Mrs. Edith Gerard  
Mrs. W. A. Boyd  
Marie Petillo  
Section No. 20 — Mrs. Grace Muench, Captain  
Mrs. Richard Newman  
Mrs. D. McNish  
H. Hickok  
John McNair  
Walter Gilby  
Section No. 21 — Mrs. Rhoda Strange, Captain  
Aldon Shwager  
Mrs. Leuce  
Mrs. Steinhauer  
Section No. 22 — Mrs. Grace Muench, Captain  
Mrs. Richard Newman  
Mrs. D. McNish  
H. Hickok  
John McNair  
Walter Gilby  
Section No. 23 — Mrs. Pauline Fuss, Captain  
Mrs. Anna Wagner  
Barbara Sim  
Mrs. H. Booth  
Mrs. A. Lewis  
Section No. 24 — No Captain  
Harland D. Box  
Section No. 25 — Mrs. Harry Winfield, Captain  
Mrs. H. Hollweg  
Mrs. E. Riedel  
Mrs. W. Sanders  
Mrs. C. Oliver  
Mrs. J. Reeves  
Mrs. J. Staller  
Mrs. Elsie Landy  
Mrs. K. Karison  
Section No. 26 and No. 29 — Mrs. Gladys Dickinson, Captain  
Mrs. Nettie Branson  
Mrs. Betty Davis  
Mrs. C. Stout  
Mrs. Vivian Sloane  
Mrs. M. Plunkett  
Mrs. Platte Drain  
Mrs. Selma Godfrey  
Mrs. Lillian De Angelis  
Mrs. Adeline Mullenberg  
Section No. 27 — Mrs. Herbert V. Tucker, Captain  
Mrs. Angelo Botto  
Mrs. H. Goldston  
Mrs. W. Sayre  
Mrs. H. Bade  
Mrs. J. Cole  
Mrs. M. Dayie  
Mrs. E. Revill  
Mrs. O. E. Natalie  
Mrs. J. Mooney  
Mrs. H. Haley  
Section No. 28 and No. 29 — Mrs. Gladys Dickinson, Captain  
Barbara Brown  
Mrs. Norma Wells  
Betty Stout  
Section No. 30 — Mrs. Charles Nutt, Captain  
Mrs. W. Warrich  
Mrs. W. Baker  
Mrs. C. Pettily  
Mrs. M. Budd  
Mrs. E. Virtue  
Mrs. F. D'Angelo  
Mrs. W. Armstrong, Sr.  
Mrs. S. Shaw  
Mrs. C. Thompson  
Mrs. J. Seay  
Mrs. C. Mitchell  
Mrs. Lorraine Gabrielson  
Bill Kelly  
Mrs. J. Coronato  
Mrs. S. O'Connor  
Mrs. J. Stoddart  
Section No. 31 — Mrs. F. Cronshy, Captain  
Mrs. Sylvia De Roog  
Mrs. Gail Roberts  
Barbara Robinson  
Betty Hahn  
Section No. 32 — Mrs. Richard Garroway, Captain  
Mrs. John Kelly  
Mrs. Joseph Sweigert  
Mrs. John Keller  
James Hussman  
Mrs. A. J. Schuldt  
Mrs. E. Minneke  
Mrs. McCumber  
Mrs. Charles Mulvey  
Mrs. W. St. Clair  
Mrs. Clark Ireland  
Mrs. Irving Garson  
Mrs. V. Hart  
F. Pozzate  
Mrs. R. Hindeman  
Mrs. A. A. Caraccioli  
Mrs. G. Jones  
S. Amosato  
Mrs. Hilda Donelaki  
Eather Lindsay  
Mrs. J. Chown

## Officers Of Belleville Community Chest Executive Board



Evan H. Thomas  
President



Mrs. George R. Gerard  
Vice President



Sidney A. Browne  
Treasurer



Edward J. Ackerman  
Board Chairman

Section No. 12 — Mrs. Isadore Goldenberg, Captain  
Mrs. Robert Mayers  
Mrs. S. McPherson  
Mrs. R. P. Zoller  
Mrs. Harry Turken  
Mrs. Leonard Cowan  
Isabel Rochau  
Mrs. Nuncio Pico  
Mrs. L. Wasserman  
Mrs. Sidney Lane  
Mrs. Carl Carducci  
Mrs. Whitman  
Leo Hood  
Mrs. Elizabeth Grover  
Mrs. Henry J. Paganelli  
Mrs. Frank De Marco  
Mrs. Thomas Dowd  
Mrs. Laverne Mazy  
Mrs. Anthony Grinnelli  
Mrs. Edward Short  
Mrs. Frank Good  
Section No. 13 A — Mrs. Henry Hansen, Captain  
Mrs. George Bauer  
Mrs. Charles George  
Mrs. Henry Allen  
Mrs. Lloyd Nunn  
Mrs. William Konrod  
Mrs. Robert Lunn  
Mrs. H. Hansen  
Miss L. Goettert  
Section No. 13 B — Mrs. Max Schwarz, Captain  
Mrs. Floyd Thomas  
Mrs. Adolph Bick  
Mrs. Richard Hartnell  
Mrs. Benjamin Becker  
Mrs. George Beeson  
Mrs. Harry Moore  
Mrs. Paul Rodgers  
Mrs. Irving Taylor  
Mrs. W. Alber  
Mrs. Edwin Carben  
Mrs. Malouin Shav  
Mrs. Richard Bennett  
Mrs. Frederick Gray  
Mrs. Edward Lewis  
Mrs. George Manley  
Mrs. Seymour Kirch  
Mrs. Samuel Franson  
Mrs. E. P. Delhagen  
George Beeson  
Harry Moore  
Mrs. J. Landrum  
Seymour Cuker  
Mrs. Harold Zimar  
Mrs. Benjamin Moody  
Mrs. Irwin Chart  
Mrs. Frederick Schroeder  
Mrs. Thomas Murray  
Mrs. Andrew Goddard  
Mrs. Martin Snider  
Mrs. Frank Caskey  
Mrs. A. J. Mastroni  
Mrs. W. Bergida  
Miss Clarizio  
Mrs. Wittmann  
Mrs. Henry Reiman  
Mrs. S. Walters  
Mrs. Vance Hanley  
Mrs. R. Mayers  
Section No. 14 — Mrs. Patrick L. Petoia, Captain  
Charles Natale  
Lillian Mellano  
Mrs. Grace Monahan  
Mary Tassello  
Section No. 15 — Mrs. Evan H. Thomas, Captain  
Mrs. Henry L. Sturge  
Mrs. James P. Condon, Jr.  
Ralph Transue  
Mrs. Robert P. France  
Virginia Lembrecht  
Mrs. Vilma Vitale  
H. Naylor  
Barbara Gaudioso  
Irving Folk  
Mrs. Lida Baker  
Mrs. E. J. Lambrecht  
Ethel Akersten  
Mrs. June Jucullo  
Robert Pest  
Section No. 16 — No Captain  
Harold Hollar  
Mrs. J. Ryan  
Eugene Kelly  
Mrs. J. Donnelly  
Godfred Johnson  
Martin Malague  
Section No. 17 — Michael Dacey, Captain  
Mrs. James A. Leonard  
Mrs. Thomas Dowd  
Francis Macey  
Mrs. William Friel  
Mrs. John Tully  
William Friel  
Mrs. Rudy Garby  
Mrs. Walter Loewen  
Mrs. Joseph Trommel  
George Mahler  
Lawrence McGuirk  
Edward Meyer  
Ann Donovan  
Greta Kinnely  
Section No. 18 — No Captain  
Harold Hollar  
Mrs. J. Ryan  
Eugene Kelly  
Mrs. J. Donnelly  
Godfred Johnson  
Martin Malague  
Section No. 19 — Herman Knuppel, Captain  
Mrs. Herbert L. Niles, Co-Cap.  
Mrs. Marion Peck  
Mrs. R. C. Whitfield  
Mrs. Edith Gerard  
Mrs. W. A. Boyd  
Marie Petillo  
Section No. 20 — Mrs. Grace Muench, Captain  
Mrs. Richard Newman  
Mrs. D. McNish  
H. Hickok  
John McNair  
Walter Gilby  
Section No. 21 — Mrs. Rhoda Strange, Captain  
Aldon Shwager  
Mrs. Leuce  
Mrs. Steinhauer  
Section No. 22 — Mrs. Grace Muench, Captain  
Mrs. Richard Newman  
Mrs. D. McNish  
H. Hickok  
John McNair  
Walter Gilby

Robert Peppel  
Miss M. Peppel  
Section No. 16 — No Captain  
Harold Hollar  
Mrs. J. Ryan  
Eugene Kelly  
Mrs. J. Donnelly  
Godfred Johnson  
Martin Malague  
Section No. 17 — Michael Dacey, Captain  
Mrs. James A. Leonard  
Mrs. Thomas Dowd  
Francis Macey  
Mrs. William Friel  
Mrs. John Tully  
William Friel  
Mrs. Rudy Garby  
Mrs. Walter Loewen  
Mrs. Joseph Trommel  
George Mahler  
Lawrence McGuirk  
Edward Meyer  
Ann Donovan  
Greta Kinnely  
Section No. 18 — No Captain  
Harold Hollar  
Mrs. J. Ryan  
Eugene Kelly  
Mrs. J. Donnelly  
Godfred Johnson  
Martin Malague  
Section No. 19 — Herman Knuppel, Captain  
Mrs. Herbert L. Niles, Co-Cap.  
Mrs. Marion Peck  
Mrs. R. C. Whitfield  
Mrs. Edith Gerard  
Mrs. W. A. Boyd  
Marie Petillo  
Section No. 20 — Mrs. Grace Muench, Captain  
Mrs. Richard Newman  
Mrs. D. McNish  
H. Hickok  
John McNair  
Walter Gilby  
Section No. 21 — Mrs. Rhoda Strange, Captain  
Aldon Shwager  
Mrs. Leuce  
Mrs. Steinhauer  
Section No. 22 — Mrs. Grace Muench, Captain  
Mrs. Richard Newman  
Mrs. D. McNish  
H. Hickok  
John McNair  
Walter Gilby

Mrs. Eve McCoy  
Helen Pomponio  
Mrs. Mary Mossbacher  
Marie Pietillo  
Mrs. Michael Dacey  
Section No. 18 — Mrs. Frank G. Van Dyke, Jr., Captain  
Mrs. Carl Hiltnerhouse  
Mrs. Edward Ackerman  
Mrs. Arthur Knab  
Mrs. Joseph Noonan  
Frank Van Dyke, Jr.  
Mrs. Wilfred Yudin  
Harriet Ackerman  
Mrs. Vincent Garcia  
Mrs. Buelah Goodenough  
Mrs. Frank M. Durkee  
Section No. 19 — Herman Knuppel, Captain  
Mrs. Herbert L. Niles, Co-Cap.  
Mrs. Marion Peck  
Mrs. R. C. Whitfield  
Mrs. Edith Gerard  
Mrs. W. A. Boyd  
Marie Petillo  
Section No. 20 — Mrs. Grace Muench, Captain  
Mrs. Richard Newman  
Mrs. D. McNish  
H. Hickok  
John McNair  
Walter Gilby  
Section No. 21 — Mrs. Rhoda Strange, Captain  
Aldon Shwager  
Mrs. Leuce  
Mrs. Steinhauer  
Section No. 22 — Mrs. Grace Muench, Captain  
Mrs. Richard Newman  
Mrs. D. McNish  
H. Hickok  
John McNair  
Walter Gilby

Sara Daniels  
Thelma Weidman  
P. W. Diehl  
Helen Del Grosso  
Mrs. Howland  
James Chiara  
Eileen Schurr  
Marian Peppel  
Mrs. James Dunn  
Mrs. Harry Fallows  
Helen Colehamer  
Donna Miller  
Seymour Grossman  
Bernard Thaler  
Mrs. Helen Scott Diehl  
Mrs. Herman Knuppel  
Louise Mingle  
Mrs. Lillian Waxman  
Alice McKenzie  
Marian Moe  
Section No. 21 — Mrs. Rhoda Strange, Captain  
Aldon Shwager  
Mrs. Leuce  
Mrs. Steinhauer  
Section No. 22 — Mrs. Grace Muench, Captain  
Mrs. Richard Newman  
Mrs. D. McNish  
H. Hickok  
John McNair  
Walter Gilby

Belleville 2-1497 EYES EXAMINED

**Dr. M. Roachvarg**

OPTOMETRIST

Hours: Evenings: Mon. and Fri. to 8  
DAILY: 10-12 2-6  
And by Appointment  
Wed. to Noon

132 Washington Avenue  
Belleville

## House-To-House Leaders



Violet F. Rochau  
Residential



James A. Leonard  
Residential

## HERE'S THE SECRET TO Faster Service on Party Lines!



Actually it's no secret at all. Most people already know. Faster service on Party Lines is simply a matter of cooperation:

- Allowing a few minutes between calls—so everybody on the party line can make and receive calls, too. Makes the whole line happy.
- Hanging up g-e-n-t-l-y when the line's in use.
- Being quick to release the line if a neighbor needs it in an emergency.

NEW JERSEY BELL TELEPHONE COMPANY

**Kal's**

"The House on the Hill"

Nutley 2-9770  
(Close Mondays)  
Harrison Street  
(Off Franklin Ave.)

NOW!! Our Newly Enlarged Dining Room  
Comfortably Seats 125 Persons  
Try Us For That Regular and Special Dinner

Fresh Jumbo Cocktail or Cherry Stone Clam Cocktail .45  
Marinated Herring or Chopped Chicken Liver .35  
Fresh Fruit Cup Supreme .30

DINNER SPECIALS

APPETIZERS:  
Tomato, Apple, Prune Juice

SOUP:  
French Onion Au Gratin, Consome or Soup Du Jour  
(Kal's Crab Meat Delight Served With All Dinners)

TREES:  
Whole Live Broiled Maine Lobster, drawn butter 2.75 & up  
Fresh Crab Meat Au Gratin a la Kal's 1.95  
Fried Jumbo Shrimp, tartar sauce 1.50  
Combination Sea Food Platter 1.50  
Broiled Swordfish Steak, drawn butter 1.50  
Broiled Halibut, drawn butter 1.50  
Broiled Filet of Sole, saute meuniere or fried 1.25  
Fresh Chopped Sirloin Steak 1.50  
Breaded Veal Cutlet 1.50  
Genuine Calfs Liver 1.50  
Broiled Pork Chop 1.50  
Half Broiled Spring Chicken garni 1.75  
Broiled Lamb Chop 1.95  
Roast Vermont Turkey, dressing 1.95  
Roast Long Island Duckling 1.95  
Grilled Ham Steak 1.95  
Club Steak 2.50  
Sirloin Steak 2.95  
Filet Mignon 2.95  
Kal's Large Sirloin Steak 3.95  
Kal's Large Filet Mignon 8.50  
Planked Sirloin (for two) 8.50  
Chateau Briand (for two) 8.50

DESSERTS:  
Home Made Pies  
Frozes Eclair  
Flavored Ice Creams  
Rice Pudding  
Jello  
Melons in Season  
Fresh Fruit Supreme  
Biscuit Tortoni  
Ass. Cheeses  
Choc. Pudding  
Rasp. Sherbet

BEVERAGES:  
Coffee Tea Milk  
Demi Tasse Iced Tea or Iced Coffee

**DANCE YOUR WAY TO POPULARITY THIS WINTER**

You, too, can be a popular dancer in no time if you come to Arthur Murray's. It's quick and easy to learn to dance his way and fun, too. So don't wait... come in now...

and have the time of your life this winter. Our studios are open from 10 a.m. to 10 p.m.

**WILL YOU ACCEPT A \$100 TRIAL LESSON?**

**ARTHUR MURRAY**

Newark, 106 Halsey St., Market 3-5151. East Orange, 44 Brick Church Plaza, Orange 3-3900.

Also at L. Bamberger & Co., Newark—10th Floor Studios

**money! in a hurry!**

Obtain a Fidelity Union Low Cost Personal Loan

Always remember that Fidelity Union is ever ready to grant you a low-cost personal loan at attractive rates.

Men and women regularly employed or with a steady income find this service a great help in time of need. Loans are granted from \$100 to \$2,500, usually within 24 hours. That's MONEY IN A HURRY!

Call at our nearest office—there are 15 in Essex County—or phone or write. You will appreciate the low rate and the speedy service.

**FIDELITY UNION TRUST COMPANY**

NEWARK • BELLEVILLE • EAST ORANGE • IRVINGTON

New Jersey

In Newark: 755 Broad Street • 464 Board Street  
2 Ferry Street • 158 Fleming Avenue • 500 Orange Street  
1 Bloomfield Avenue • 503 Clinton Avenue  
210 Ferry St. • 293 Lyonn Avenue • 241 Springfield Avenue  
In East Orange: 480 Central Avenue • 329 Main Street  
224 North 18th Street  
In Belleville: 144 Washington Avenue  
In Irvington: 1097 Clinton Avenue

MEMBER FEDERAL DEPOSIT INSURANCE CORPORATION



# The Meeting Place

Edgar Jean Bratteo

George Bernard Shaw once said that youth is such a wonderful commodity it's a pity to waste it on young people. He had a point. I've heard people bemoan the lost days of their youth, and wish themselves back in the time without responsibilities, taxes, jobs. I can't blame them too much, but if we look back we'll find that the time of youth had its drawbacks to balance its advantages.

I have one major reason for not wishing myself back in my boyhood. True, it was a time of magic, but it was also a time of insensitivity. A very young person—say one who has not yet reached twenty—lives in a world of the beautiful facts of life does not understand. Many of the beautiful facts of life bounce off him without leaving an impression because he is not equipped to evaluate them and extract from them all they have to give.

With added years comes a cer-

tain maturity. There are exceptions, of course. Now people who have lived fifty years and are still children. But in many cases one has to grow older, and acquires a certain wisdom, a certain way of looking at the world around him that he could not have possibly had in his youth.

Age mellow, it is said, and said truly. With age one takes on tolerance. One is less easily hurt by the random remarks around him. One is kinder toward his fellows, and accepts their faults as part of the plan of living. And, most important, one can understand the humors around him and understand why they act as they do. He can assess them and make himself richer by this assessment. He can think, which is a gift that comes only with maturity. Youth believes it thinks, especially, the gimpy-faced teenagers who consider themselves intellectuals by embracing the spurious doctrines of radicalism.

They do not think with the instrument made for thinking the mind. They think with their emotions, and that is not thinking.

Youth dreams, but cannot understand its dreams. With maturity comes understanding, of one's self as well as of others. The later dreams are tempered, because the fires burn not quite so roaringly. But the dreams of maturity are true, they have been thought out, and as such are really not dreams but part of the thought-structure of a rounded, sentient human being.

No, I would not return to the days of my youth, where everything went by me in a blur I did not understand. I will not return to the days when love, desire, ambition were only flashes on a distant horizon, when people were categories. Now people are individuals, I live with them. I love them as single entities.

No, I will not return. But I would like to take some of the years I would gain by such a return and tack them on to the end of my life.

There is something nice about getting up in the middle of the night to grab a quick snack. You don't do it often, but when you do it's all the more poignant because of its rarity.

To start with, you're awakened by a mighty pain in the pit of your stomach. You lie there a while, wondering if you should get the doctor out of bed at this

hour, or if you can last till morning. After a few minutes you realize that this is nothing—a doctor can cure.

You slide silently out of bed, slip into that old fuzzy robe and tired slippers, and head quietly for the kitchen, closing the door behind you for complete privacy. After all, this is one time when a person should be totally alone, should operate with freedom and ease. Perhaps the dog comes along just to pick up any pieces that might fall from the table, but a good dog, on such an occasion, is not an intrusion. He is part of the privacy, an adjunct to the aloneness.

You kneel before the open refrigerator door and ponder. Is this the kind of stomach pain to be alleviated only by a few slices of cold roast beef, a chicken leg, a wedge of camembert, and a bottle of beer? Or is this the delicate sort of misery which calls for the subtlety of cream cheese, unspiced crackers, and milk?

After a leisurely debate you decide that the second course is strictly for ladies and invalids, and set to work building the first. With a few brisk wheel-wecks, you put a keener edge on the knife back of three thick slices of roast beef, scoop a nice portion of potato salad onto a dish, add a celery and a couple of radishes, a sliced onion. You spread a few slices of carrot, yep, with whipped butter, pry the cap off a bottle of brew, lift a few ladies-ful of pineapple chunks into a bowl, and you're set.

Back at the table you go to it, thinking that surely no food ever tasted quite so marvelous. You work slowly, of course. Speed does not exist here. You finish the roast beef and vegetables, then go back to the cucumber refrigerator for the wedge of camembert and spread it on a fresh slice of carrot. Every other mouthful or so is balanced by a slug from the bottle. No glass is needed. At this time of night you don't stand on ceremony.

From time to time you flip chunks to the dog, by way of a bribe. If you don't he may cause trouble by reminding you loudly of his presence, thereby waking the household and spoiling everything.

Then the pineapple chunks follow the rest. Finally you sit back, but there is still a teasing unrest inside you. You realize suddenly that a little corner of your stomach is still empty. With a mumbled apology, you rise to make amends.

You spread several slices of bread with strawberry jam.

When this is down you pause to feel. Then you smile. The corner is filled and everything is in order inside. You know that now you'll last until breakfast. Feel free to sleep again, you switch off the light, and followed by the dog, you head back to the bedroom. With a solid thump the door settles on its hinge, while you get back into bed quietly.

You lie there a minute, thinking that life holds few finer moments than the one following a good hefty mid-night snack.

## ROSARY SOCIETY ANNOUNCES PLANS

October is Rosary Month; Women's Society Arranges Nutley Church Observances

In observance of Rosary Month, the Rosary Society of the Holy Family Roman Catholic Church of Nutley is sponsoring a display of Rosary beads on the four Sundays of October. Rosaries of all types are being shown in the church basement and are available for purchase after mass each Sunday. Mrs. Lenore Maurillo is in charge of the committee handling the program.

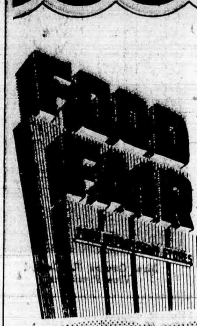
In continuation of its program, the society held its sixth annual Communion breakfast last Sunday, which was designated Rosary Sunday. Members received Holy Communion at 8:15 a.m. mass and then breakfast in the auditorium of the new school. At 7:30 p.m. the new members were formally received and a sermon and benediction was delivered.

A social for all members and their husbands was held. All officers of the church organizations were invited to attend the investiture and social.

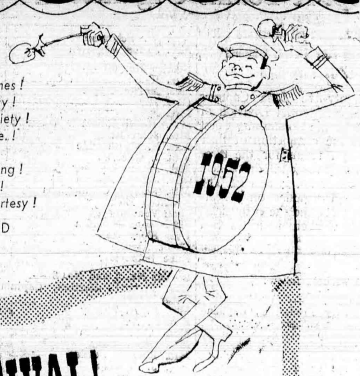
Mrs. Frank Malizia was chairman of the breakfast committee and Mrs. Carl Colucci served as co-chairman. Mrs. Albert Cocchiola and W. W. Brown and Mrs. Frank Barra assisted in the reception of new members and Mrs. Henry Aurich and Mrs. Joseph Cutler were in charge of decorations.

On Saturday, October 25 at 8 a.m., a Monte Carlo night will be held in the school auditorium. Proceeds of the event will go towards a new classroom for the school.

# Famous For Quality!



Famous For Famous Names!  
Famous For Finest Quality!  
Famous For Greater Variety!  
Famous For Fresher Mds.  
Famous For Low Prices!  
Famous For Easy Shopping!  
Famous For Extra Value!  
Famous For Friendly Courtesy!



OUR DAIRY FAIR CELEBRATES

## CHEESE FESTIVAL! KRAFT VELVEETA

KRAFT SLICED AMERICAN CHEESE  
AXELROD COTTAGE CHEESE  
FYNE SPRED MARGARINE YELLOW QUARTERS  
State Fair Real Sharp Cheese

2 lb. pks 93¢  
8 oz. pks 37¢  
1 lb. pks 25¢  
1 lb. pks 21¢  
lb. pks 79¢



**DIGNIFIED FUNERAL SERVICE**  
AVAILABLE TO ALL REGARDLESS OF FINANCIAL CIRCUMSTANCES  
**NON SECTARIAN**

**KIERNAN FUNERAL HOME**  
GEORGE F. KIERNAN  
101 UNION AVE. BELLEVILLE 9, N.J.  
BELLEVILLE 2-3503

Presenting A  
**REALLY NEW SINGER VACUUM CLEANER**  
SINGER SEWING MACHINE  
151 Washington Ave., Belleville  
BE 2-1255

**PRIVATE PARKING FACILITIES**

Careful planning is always essential. At times, family circumstances may require guidance as to cost, which would in no way affect the refinement or dignity of the service.

**IRVINE AND SON FUNERAL HOME**  
WM. V. IRVINE • Directors • WM. V. IRVINE, JR.  
276 WASHINGTON AVE., BELLEVILLE, N. J.  
Telephone BELLEVILLE 2-1114

**COAL-FUEL OIL**

60 Years of Dependable Service

Automatic Metered Oil Deliveries

Filtered Oil Deliveries

SERVICE ON ALL TYPES OF BURNERS

**JOHN HAWKINS & SON**  
198 PARK AVE. Nutley 2-1800

**KARL'S**  
CALL  
BE. 2-6700  
TV SERVICE  
• GENUINE PARTS  
• SAME DAY SERVICE  
• ALL MAKES  
• REASONABLE RATES  
• FACTORY AUTHORIZED  
• PROMPT SERVICE  
• DAY OR EVENING

**KARL'S T. V. SERVICE**  
111 Washington Avenue  
Belleville  
Dan Noreen, Manager

**MCDONOUGH Funeral Home**  
637 Broadway  
Newark, N. J.  
Ph. HU 5-3138

- Convenient to all transportation.
- Parking Area for over 50 cars.
- Casket display room on premises.
- Modern throughout.
- Large air-cooled rooms.
- Music.

Rendering Dignified, Personal Service.  
Your Inspection is Invited.

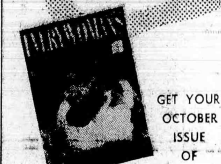
**GIRLS... Openings now for TELEPHONE OPERATORS**

- No Experience Needed—Earn While You Learn
- New Higher Wages for 40-Hour Week
- Regular Raises
- Pleasant Surroundings and Friendly Associates
- Steady Employment with Opportunity for Advancement

Inquire today!  
Call Your Local Chief Operator Or Visit the Women's Employment Office, Main Floor, 540 Broad St., Newark

Weekdays: 9 A.M.—5 P.M.  
Wednesdays: 9 A.M.—5 P.M.  
Saturdays: 9 A.M.—12 Noon

**NEW JERSEY BELL TELEPHONE COMPANY**



**EVERYWOMAN'S MAGAZINE** ONLY 5¢  
COME TO FOOD FAIR FOR THESE FAMOUS NAMES AS ADVERTISED IN EVERYWOMAN'S.

PHENIX-PABST-ETT Cheese  
KNOX Gelatine  
SNOWY The powdered bleach  
WINDEX for windows  
DURKEE'S COCOANUT  
TUFFY Scouring Pads  
WIZZARD WICK Deodorant  
PUSS 'N' BOOTS Cat Food  
AEROWAX for floors  
BENNETT'S Chili Sauce  
HUNT'S Tomato Sauce  
KITCHEN BOUQUET  
McCORMICK'S Spices  
SUGAR 'N' SPICE Hot Dawg Relish  
MORTON'S Salt  
SWIFTING  
BLU-WHITE Soap Flakes  
BON AMI Cleanser  
CLOREX Bleach  
DRANO for toilet bowl  
PARKAY Margarine  
McCORMACK'S Vanilla Extract  
SWIFT'S Premium Bacon  
ROYALTY Lace Paper Doilies  
ROYALTY Plastic-Chrome Shelving  
KLEENEX Tissues  
PETER PAN Peanut Butter  
KELI-RATION  
FARD Dog Food  
KARO Syrup  
MAZOLA Oil  
VERMONT Maid Syrup  
DINTY MOORE Beef Stew  
HUDSON Paper Napkins  
WAX SEAL Waxed Paper  
GORTON'S Codfish Cakes  
LADY WILDBROOD Slipmoss  
TAMPEX  
JOHNSON'S Cotton Tips  
MODESS

**Bakery Feature**  
LADY FAIR DELICIOUS  
**HALF RINGS**  
Reg 45¢ each **39¢**

PSG\* TOP QUALITY MEATS  
AMERICA'S OLYMPIC CHOICE STILL SETTING RECORDS FOR QUALITY  
\* Protected, Selected, Guaranteed

**FRESH CALAS**  
PICNIC STYLE  
SHORT SHANK  
LEAN, WELL TRIMMED  
lb. **37¢**

PICK OF THE FLOCK — FULL BREASTED  
**HEN TURKEYS** FRESH KILLED 12 to 14 lbs. aver. lb. **49¢**

*Delicatessen Delight*  
OSCAR MAYER  
**MIDGET LIVERWURST** 8 oz. pks **33¢**

*Quality Frozen Foods*  
CHOPPED OR LEAF  
**BIRDSEYE SPINACH** 14 oz. pks **19¢**  
MINUTE MAID, LIBBY, SUNKIST  
**ORANGE JUICE** 2 5 oz. cans **29¢**  
DICED — FROZEN  
**Snow Crop POTATOES** 16 oz. pks **19¢**

*Farm Fresh Fruits and Vegetables*  
CALIFORNIA SWEET RIFE  
**Honeydew MELONS** each **25¢**  
SELECTED  
**Western CARROTS 2** 1 lb. original bunches **19¢**

*Ocean Fresh Sea Foods*  
FRESH CAUGHT  
**LARGE BLUEFISH** lb **25¢**  
FRESHLY SLICED — RED  
**SALMON STEAKS** lb **65¢**

**Serve Yourself the Best — PAY LESS!**



# FAMOUS FOODS FAIR

Famous For Famous Names! Famous For Low Prices!

**Bluebird TANGERINE & GRAPEFRUIT Juice** 46 oz. can **19¢**  
**Starkist Tuna** CHUNK STYLE - WHITE MEAT No. 1/2 can **31¢**  
**Libby Baked Beans** DEEP BROWN VEG, PORK MOLASSES 14 oz. cans **25¢**  
**Tenderleaf Tea Bags** . pkg. of 48 **49¢**  
**Vanity Fair Tissues** FACIAL 2 400 sheet pkgs. **39¢**

KEEBLER CHOCOLATE DROP COOKIES 10 1/2 oz. pkg. **48¢**

KEEBLER PECAN CRUNCH COOKIES 10 1/2 oz. pkg. **46¢**

**CHUN KING**  
 SOY SAUCE 3 OUNCE SIZE bottle **10¢**  
 BEAN SPROUTS No. 303 SIZE can **10¢**  
 CHOW MEIN NOODLES 3 oz. can **15¢**  
 SUGAR CHICKEN & NOODLES cans **55¢**  
**Chow Mein Dinner** VEG. pkg. **51¢**

**LA ROSA**  
 MACARONI & SPAGHETTI  
 Has less calories, more protein than other important foods. **2 lb. 35¢**

**Strongheart DOG FOOD**  
 Contains chlorophyll - for extra aid in digestion! **3 tall cans 28¢**

**ZIPPY LIQUID STARCH**  
 No cooking, just add water. **qt. bot 21¢**

**WESTON CHOCOLATE CHIP COOKIES**  
 They're so delicious and thick full of chocolate chips. **8 oz. pkg 29¢**

**FREE** of Extra Cost A LOAF OF **LADY FAIR BREAD** or Your Choice of Any Up to 20¢ in Value  
 with Box Top Coupon from Economy Pkg. of **RINSO** Economy package **53¢** Large package **27¢**

**SWIFT'S PREM** 12 OUNCE SIZE can **45¢**

**JOY LIQUID DETERGENT** 7 oz. bot. **29¢**

**SWAN SOAP** LARGE SIZE 2 pkgs **25¢**

**PHILLIP'S VEGETABLE SOUP** 10 1/2 oz. can **11¢**  
**TOMATO SOUP** 10 1/2 oz. can **9¢**  
**VEGETABLE BEEF** 10 1/2 oz. can **15¢**  
 CHICKEN, NOODLE, RICE SOUPS

**POMPEIAN OLIVE OIL**  
 pl. can **73¢** 8 oz. can **39¢** 2 oz. bot **13¢**

**WILBERT FLOOR WAX** NO RUB  
 qt. **69¢** pl. can **39¢**  
 GLASS WAX PINT SIZE can **35¢**

**ROYAL LACE**  
 DOILIES ASSORTED SIZES pkg. of 4 **49¢**  
 SHELF PAPER EXTRA-LARGE ASSORTED COLORS pkg. **39¢**  
 PLACE MATS 10" x 15" pkg **49¢**

**MRS. GRASS SOUP MIX**  
 Noodle or Chicken. Makes 6 delicious servings! Just add water. **pkg 13¢**

**LUCKY STAR Rock LOBSTER**  
 Tender, Solid Meat. Sea Food of the Best. No. 1/2 can **47¢**

**LIFEBUOY SOAP** BATH SIZE 4 cakes **43¢**

**LUX SOAP** REGULAR SIZE 3 cakes **22¢**

**TIDE** GIANT SIZE pkg **69¢** LARGE SIZE pkg **29¢**

**SILVER DUST** with DISH TOWEL giant pkg **57¢** with FACE CLOTH lg. pkg **28¢**

**COLOSOF Toilet Tissue** 2 500 2 ply sheet rolls **23¢**

**IVORY FLAKES** LARGE SIZE pkg **27¢**

**CRISCO** VEGETABLE SHORTENING 3 lb. can **85¢**

**CAMAY SOAP** BATH SIZE 4 cakes **43¢**

**SWAN SOAP** REGULAR SIZE 3 cakes **23¢**

CONTINUING BY POPULAR ACCLAIM WITH ADDED VARIETY, OUR BIG

## Candy Confection!

CANDY COATED CHOCOLATE

**M & M's**

THE CHOCOLATE TREAT THAT'S NEAT TO EAT.



7 oz. cello pkg. **25¢**



**ADAMS CHICLETS**

ASSORTED - Delicious! Refreshing! The crisp candy coating seals every bit of the delicious flavor inside each chicle. Choice of Peppermint, Spearmint and Pepsin, or Dentyne.

6 5c pkgs. **23¢**

**HOLLYWOOD HOME-PAK**

An assortment of 6 delicious candy bars. A treat for every taste. Take home a package.

6 5c bars **23¢**

**POWER'S ROSE BLOSSOMS**

Old fashioned, flavorful, rose-pink, bite size shells, filled with the tastiest peanut butter.

13 oz. pkg. **39¢**

**FLAVOUR CHICKEN BONES**

Individually wrapped taste treats! Full of nuts and Butterscotch!



9 oz. pkg. **29¢**

**CRESCENT SALTED PEANUTS**

Freshness sealed in! A big cellophane bag!

12 oz. pkg. **39¢**

**FALCON COCOANUT BRITTLE**

Made of the very finest sliced coconut with plump whole Virginia peanuts... Forked out very thin making it tender and flaky.

12 oz. pkg. **39¢**

**CRESCENT PEANUT BRITTLE**

Crisp fresh! Delicious Flavor combination of candy and peanuts! Treat the family to a wonderful candy.



1 lb. pkg. **35¢**

**AVALON PEANUT BUTTER CLUSTERS**

Fresh roasted peanuts dipped in quality milk chocolate chewy and delicious

5 1/2 oz. pkg. **25¢**

**Milk CHOCOLATE LOLLY CONES**

No muzzed up hands! Give the little tots a Lolly Cone. Milk chocolate on a stick.

2 1/2 oz. pkg. **29¢**

**QUEEN ANNE PECAN PADDIE**

Delicious, milk-chocolate coated patties chock full of luscious crisp pecans! Finest Quality!



8 oz. pkg. **59¢**

**TOOTSIE POP PARTY-PAK**

Famous Tootsie Pops a favorite with all! By the makers of Tootsie Rolls. Clever Party Game on back of every package.

10 pops **21¢**

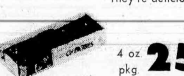
**TOPP'S CLOR-AID Chlorophyll GUM**

Today's "Breath Taking" miracle honestly priced for all to enjoy. For a breath of spring this fall, try Clor-Aid.

3 10c pkgs. **23¢**

**CELLA'S CHOC. COVERED CHERRIES**

100% liquid centers, sealed in extra heavy chocolate of highest quality. They're delicious!



4 oz. pkg. **25¢**

**CHOCOLATE TOWN COCOANUT YUMMIES**

Individual cups of Grated coconut blended in a creamy center, covered with fine quality 5 oz. milk chocolate. **pkg 27¢**

**2 Wonderful Coffees**  
 RICH WINERY, HEAVY BODIED  
**LADY FAIR COFFEE** 1 lb. bag **79¢**  
 MILD MELLOW SWEET DRINKING  
**FYNE TASTE COFFEE** 1 lb. bag **77¢**

SAVE 10¢ ON EITHER BLEND!  
 Use Coupon on back of Good Luck Margarine Package

554 Washington Avenue, Belleville

**OPEN LATE - THURSDAY to 9 p.m. FRIDAY to 10 p.m.**



**The Belleville Times**  
ADVERTISING, NEWS AND BUSINESS OFFICE  
328 WASHINGTON AVENUE  
Published every Thursday by The Belleville  
News Corporation, Belleville, N. J.  
Telephone BELLEVILLE 2-3200

RALPH E. HEINZEN, EDITOR AND PUBLISHER

**Autumn Bivouac**

Along the valley bottom  
Beneath the moon's cold light  
The camping hosts of autumn  
Lie silent in the night.  
From stone wall to the river  
In row on shadow row  
The tented cornstalks never  
Have a lamp to show,  
No sound from mounded haystacks  
Beyond the river's arm  
Like council of the captains  
Before the dawn alarm.  
But moonlight on the water  
Shines with silver flames  
And glancing in the shadows  
Plays its ghostly games  
With wreaths of mist like sentries  
Who lean on musket barrels  
And watch the campfire gleaming  
In a world free of quarrels.

Charles Malam

**Dirty Politics, Harry, Even For You.**

At the Tiber Dam site, out in Montana, Harry Truman pushed a plunger setting off the first explosion and boasted, glibly: "That is what I am going to do to Eisenhower". It is to be expected that, brought up in the Pendergast school, Truman is a Pendergast politician at heart. Alas, in the eyes of the world, he happens, also, to be President of the United States. The man he has set out to demolish, just as he dynamited the Montana shale, was the General he had assigned to the monumental task of whipping together a NATO army by which our European allies were to take on their own shoulders a part of our tremendous military burden.

Back from Paris, this week, to receive the eleventh annual Freedom Award, General Matthew B. Ridgway warned that there has been a dangerous letup in the arming of NATO by our European allies. Only a few

days previously, he had blamed French re-tape for slowing down France's contribution. The gravest danger to NATO is that our European allies will take Harry Truman's attacks on General Eisenhower at their face value and write off the international force which was designed to spread the burden of anti-Communist defenses.

The spectacle of a President of the United States attacking a key figure of our national defense just to win an election is tragic. Is it cheap and filthy politics, a page out of the Pendergast book and it cheapens the office and the man. Harry Truman will go down in history for the corruption which existed around him and for his Pendergast ways—a cheap and small politician who inherited by accident the nation's highest trust.

Surveys published this week show that the reaction of the man and the woman in the street to his whistle-stop technique is hostile. Harry Truman irks the average American voter and his campaign may bring Eisenhower more votes than it takes from him.

We cite only one typical Truman "blast". Eisenhower, Truman said at Belton, at the gateway to Glacier National Park, has spent his whole life as a military man and has a military mind which, Harry dixit, is a peculiar one. For that reason, Eisenhower cannot begin to fathom the problems of foreign relations or economics. Harry did not say where he, a bankrupt haberdasher, ever learned about economics or foreign affairs.

The truth is that in his role as Supreme Commander of the Allies, before, during and after the landing in Normandy, Eisenhower faced the gravest problem of foreign relations in the history of our country. He had to fight a war against a powerful axis coalition and at the same time he had to smooth out all the multiple difficulties that arose, for example, between General Montgomery and Patton, between Churchill and all of the European allies. His role was that of a super-diplomat, a super-general and a super-politician all rolled into one.

When Harry Truman is talking about the military mind, he is speaking about the man he knew in the Missouri National Guard, in which he was an artillery Captain in World War I. A typical and a sorry example of the Missouri military mind he knew was that of Harry Vaughn, a General by the grace of Harry Truman and a purveyor in deep-freezers.

R.E.H.

**One Man's Opinion**

**Full Debate On The Korean War Is Likely In UN Assembly, But There May Be No Move Until After Nov. 4**

By RALPH E. HEINZEN

A Chinese offensive began this week across the fighting front but chill winds are already sweeping down on Korea from Siberia; winter soon will wrap up the fighting front along the 38th parallel. There have been no real truce negotiations since mid-July. The truce teams, at each weekly meeting, merely agreed to disagree in their dispute over voluntary vs. forced repatriation of prisoners. The war, which already has dragged too long and cost more than 120,000 American casualties, is truly deadlocked, as are all diplomatic negotiations.

In Washington, I found a strong trend of opinion in favor of tossing the whole Korean war problem back in the laps of the United Nations. It is an unusual paradox that although this war is being fought in the name of the UN, Russian maneuvering has prevented any debate within the UN Assembly on the Korean issue since February, 1951, soon two years.

General Eisenhower's position, taken in recent campaign speeches, is that "we are in the Korean war because the Administration grossly underestimated the actual threat" and because the Administration abandoned China to the Communists. Obviously, the UN, like the Kremlin and Peiping, are waiting to see who wins the Presidential election on November 4.

**Depends On Election**  
An Eisenhower victory almost certainly will call for an early reconsideration of the Korean war by our own government and by the UN Assembly. The complexity of a UN debate is apparent, because the very first problem which Soviet Russia is certain to raise is that of Red China's membership in the United Nations. If Russia feels her strength, she may even attempt to obtain an Assembly vote ordering the United States to pull her fleet out of Korean waters.

Even if Russia lost such a test vote, the moral effect would be tremendous.

**Period of Activity**  
General Eisenhower or Governor Stevenson, whichever is elected next month, must be guided in any change of American foreign policy by what is happening this week in Peiping, where Chinese and other Asian Communists are holding a "Peace for Asia" conference, and in Moscow, where the Russian Communist party is holding its nineteenth congress, its first in 13 years.

The world has changed and powers have been realigned in

Communist party has produced nothing new thus far this week. Stalin's personal contribution was a 25,000 word report on "Economic Problems of Socialism in the U.S.S.R." Its most interesting chapter, in this One Man's Opinion is that devoted to the world situation. There is no immediate danger of an attack on the Soviet Union; Stalin concludes, in painting a rosy picture of peace and long-range progress for the Soviet family of satellites.

**Both Sides of Mouth**

The next speaker on the rostrum, George Malenkov, who is looked upon as Stalin's successor, said just the opposite. He told the congress that the United States is out to dominate the world by force.

Even to a Russian that must be confusing. And the picture was not confusing at all when Malenkov followed Malenkov and screamed his charge that "an aggressive, anti-democratic camp headed by reactionary circles in the United States is out to dominate the world by force."

In an era when wars are in progress in Korea and in Indochina against Communist aggression, both Malenkov and Molotov called the United States "the anti-democratic camp" while referring to Russia and her satellites as "the peaceful democratic camp." To Molotov, the NATO anti-Communist defense front is "an aggressive war alliance directed against the peace-loving states of the Soviet Union, the Chinese People's Republic and countries of the people's democracies."

**Insurance Is Your Friend**  
**PERROTTA AGENCY**  
Insurance Advisors  
28 WASHINGTON AVENUE  
Nutley, New Jersey  
Nutley 2-5647

**ED. VAN DEMARK**  
**NEWSDEALER**  
Morning - Evening  
and  
Sunday Papers  
Delivered  
Phone Bell 2-3073

**DE BAGO BROS.**  
Domestic and Foreign Make  
Bicycles and Accessories  
EXPERT REPAIRING  
326 Washington Avenue  
Belleville 2-5379

**PTA Group Will Hear Review**

Of Book By Dorothy Baruch

The Reading and Study Group of the PTA of School No. 3 will hold its first meeting Tuesday evening at 8:15 o'clock in the teachers' lounge of the school. Mrs. Arthur Price will serve as hostess. The public is invited.

At the group's next meeting on October 21, guest speaker will be Leonard E. Best, chairman of the Education Planning Commission and of the New Jersey State Aid. Everyone is welcome.

**Delaporte & Mac Kinnon**  
**PLUMBING - HEATING TINNING**  
70 Belleville Avenue  
Belleville, N. J.  
Phone Belleville 2-4323

**ALBERT H. BORMANN**  
**PLUMBING HEATING**  
**COMMERCIAL RESIDENTIAL INDUSTRIAL**  
45 MERTZ AVE. Belleville 2-8247

FOR APPOINTMENT PHONE NUTLEY 2-4685  
OFFICE HOURS: 9:30 A. M. TO 12 NOON  
EVENINGS: 7 TO 9 ON MON., WED. & FRI.  
**Harold J. Wolff, O. D.**  
**EYE EXAMINATIONS**  
"FREE PARKING IN REAR"  
375 FRANKLIN AVE.  
Opposite Post Office  
NUTLEY, N. J.

**BELLEVILLE SAVERS LIKE DE WITT**  
where they earn  
**2 1/2%**  
Interest rate per annum  
**SAVINGS INSURED up to \$10,000**  
Start on next payday at this friendly locality and with \$1 to \$10 (or more)

**De Witt SAVINGS AND LOAN ASSOCIATION**  
Our 10th year  
280 Washington Ave., Belleville 9, N. J.  
Belleville 2-5264  
Daily, 9 to 4; ALSO MON. EVES., 6:30 to 8  
Savings Accounts • Mortgage Loans • G. I. Home Loans • Home Improvement Loans • Travelers' Checks • Money Orders

**WHEN YOUR ROOF LEAKS**  
CALL  
"Melville From Belleville"  
Roofing and Waterproofing  
Reliable Service  
All Work Guaranteed  
**W. W. MELVILLE**  
71 Lighth Street Belleville  
RE 2-4278 HU 5-1833  
Flat Roofs Our Specialty

**JOHN G. YOUNG**  
Plumbing - Heating - Oil & Gas Burners  
Kitchens Remodeled, Custom Built Cabinets  
Leader and Gutter Work  
Furnaces Vacuum Cleaned  
**Use Our Budget Plan For Payment**  
14 NEW STREET BELLEVILLE 2-1476

**HEAT and COOL YOUR HOME THROUGH YOUR FURNACE**  
You can enjoy an indoor temperature in the Comfort Zone every day of the year with a CHRYSLER AIR-TEMP Year-Round Residential Air Conditioner. This versatile system circulates warm air in winter and cool air in summer to every room in your home—automatically. Or, if you have a forced air furnace, we can add a "Packaged" cooling unit to give you warm weather comfort at surprisingly low cost. Call today for a free estimate... there's no obligation.

**RICHARDSON & RICHARDSON INC.**  
Authorized Distributor  
**PHONE NU 2-7777**

**Chrysler Airtemp**  
Comfort Zone

**Come In And Get Your Estimate**  
And See Our Modern Body Shop and Spray Booth  
itemized estimate on every job... your assurance of dependability, when you do business at our shop!

**TRUST OUR FACTORY TRAINED TECHNICIANS**  
**BELLEVILLE-NUTLEY BUICK CO.**  
66 Washington Avenue NU 2-0500

**Give!**  
...there's a lot of people who need your help!  
**GIVE and GIVE GENEROUSLY**  
to enable your  
**COMMUNITY CHEST**  
\* DO A GOOD JOB \*

**MEET AMERICA'S LOWEST-PRICED V-8!**  
NO OTHER MAKER GIVES YOU SO MUCH CAR FOR YOUR MONEY!  
No other car, within hundreds of dollars, can match that smart, curved one-piece windshield. No other low-priced car offers so much usable inside space... V-8 and Six power. A "Test Drive" will show you. There's no doubt about it! Ford's your best car buy for '52!  
**FORD**  
You can pay more but you can't buy better  
**GEORGE H. MEAD, INC.**  
190 WASHINGTON AVE. BELLEVILLE, N. J.